

Quantifying drivers of the thermal-infrared radiative effect of Arctic low-level clouds in cold air outbreaks

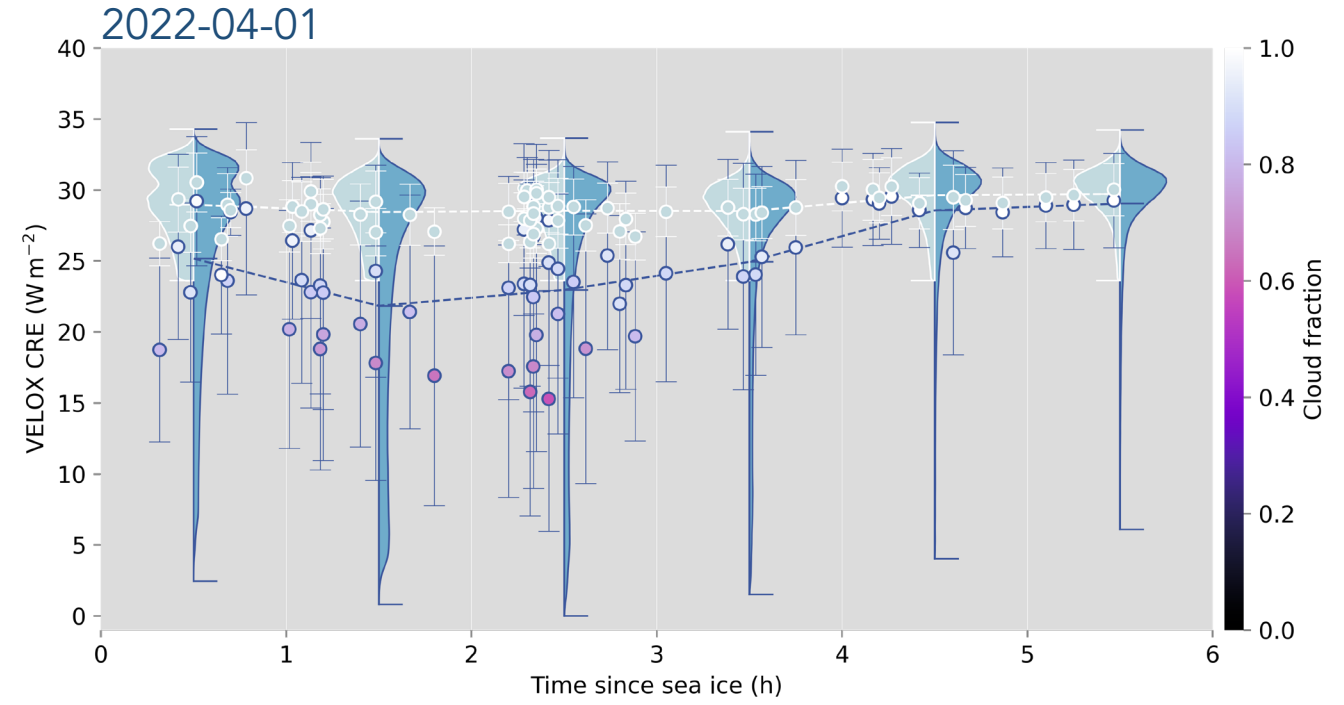
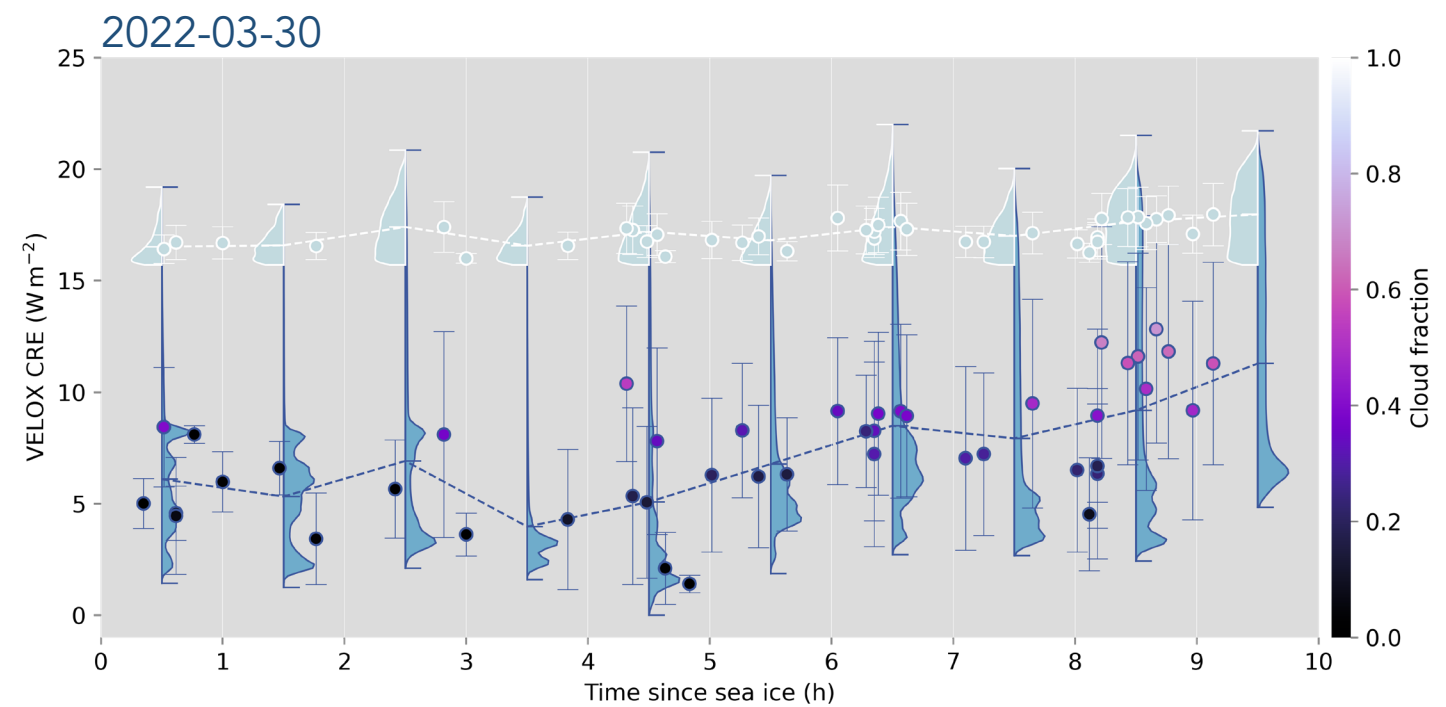
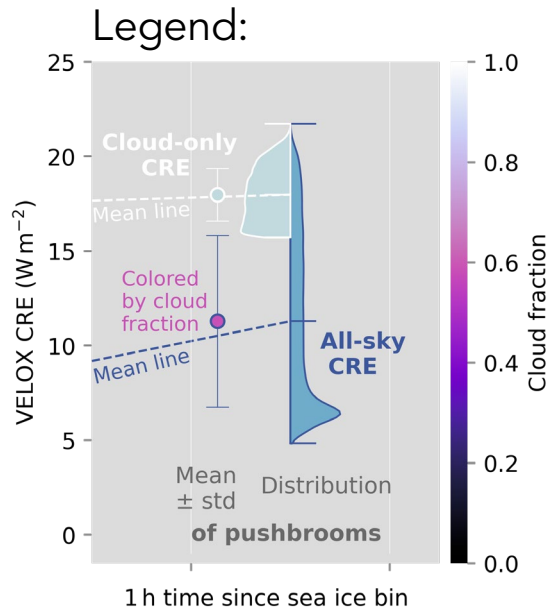
Sophie Rosenberg¹, Michael Schäfer¹, André Ehrlich¹, Anna Luebke¹,
Marcus Klingebiel¹, Joshua Müller¹, and Manfred Wendisch¹

¹Institute for Meteorology, Leipzig University, Leipzig, Germany

Supplementary material

CRE & Cloud fraction

These figures are supplements to Fig. 4 e) & f) on the poster and include the mean +/- standard deviation of the single pushbroom images. The all-sky CRE markers are colored by cloud fraction. Thus these figures give context to the violins, which show a summarized distribution of a 1 h time since sea ice bin.



Along single trajectories

These figures are a supplement to Fig. 6 on the poster and show the pushbroom images of the selected sections along the single trajectories crossing the "eastern" (green) and "western" (blue) sea ice edge.

