

# Integrated assessment of climate change impacts on the water-energy-food-ecosystem nexus in multipurpose reservoirs in Brazil

Pedro Silva<sup>1,2</sup>, Marcos Benso<sup>1</sup>, Gabriel Silva<sup>1</sup>, Eduardo Mendiondo<sup>1</sup>, and Maarten Krol<sup>2</sup>  
<sup>1</sup>University of São Paulo, <sup>2</sup>University of Twente

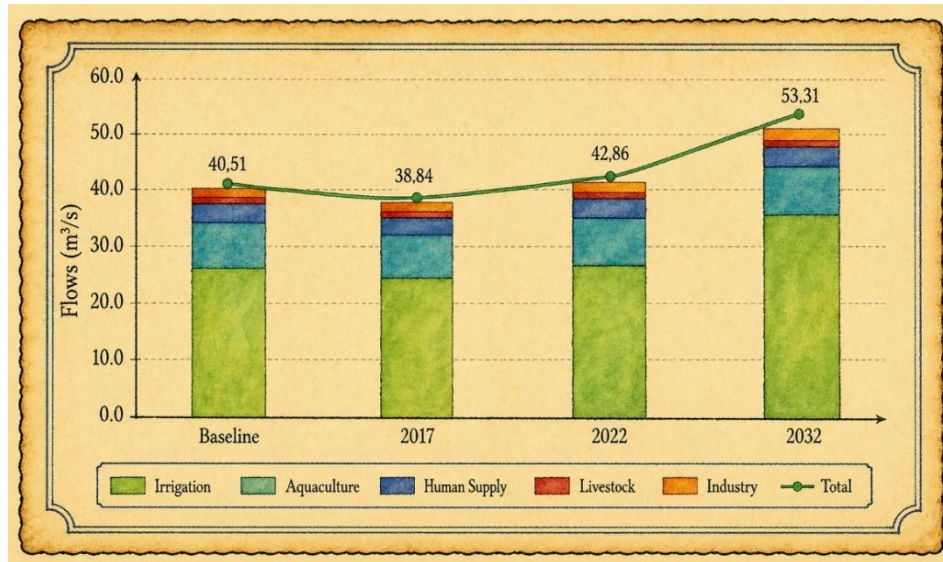


Figure 1. Evolution of total water demands (m³/s) by use in the basin

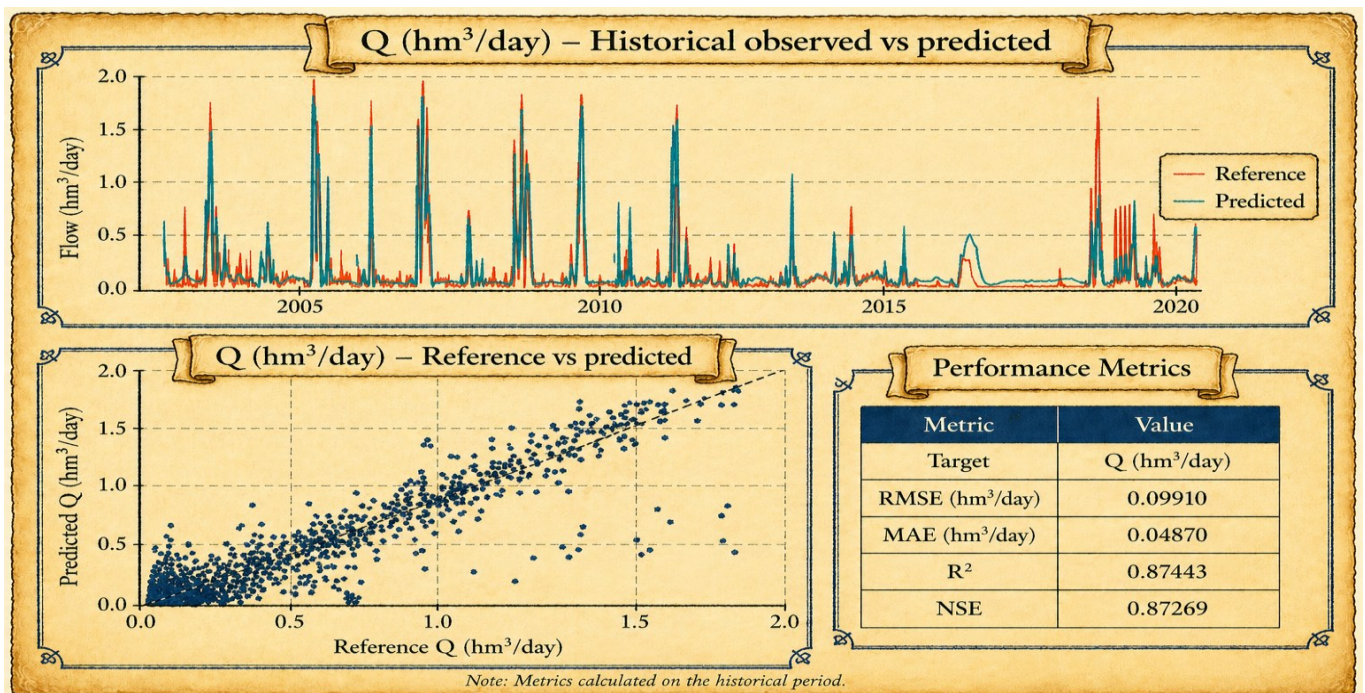


Figure 2. Performance of the hydrological model during the historical period: (top) time series of reference and predicted flows; (bottom left) scatter plot of reference versus predicted flows; (bottom right) statistical performance metrics for the flow ( $Q$ ) in  $\text{hm}^3/\text{day}$ .