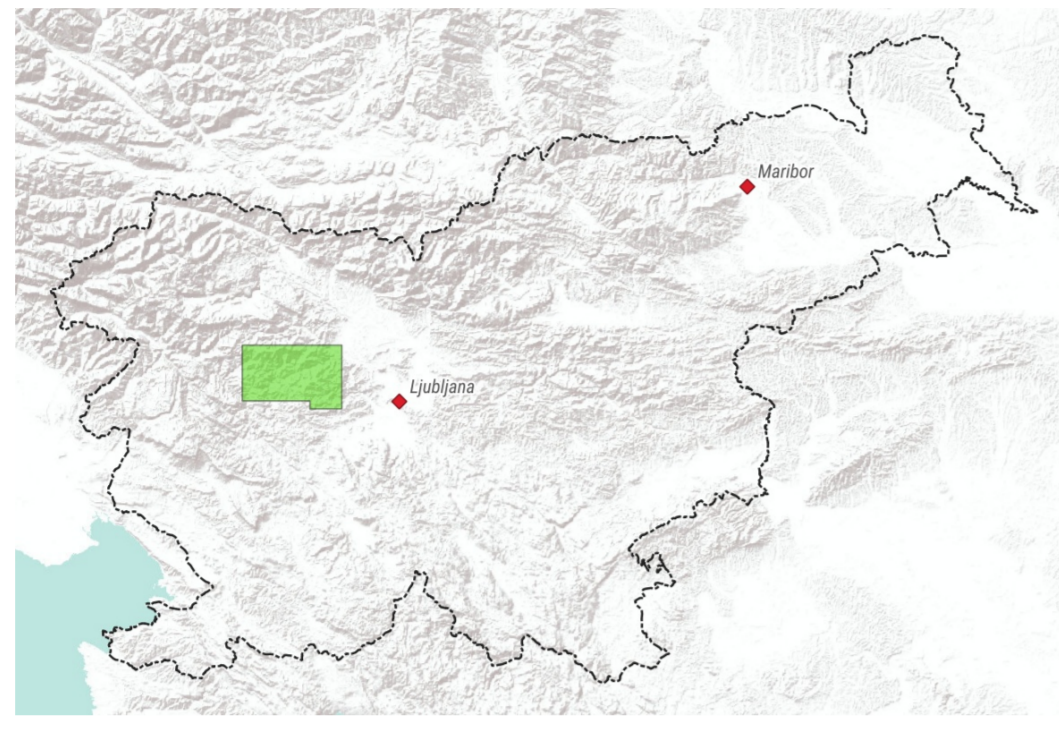
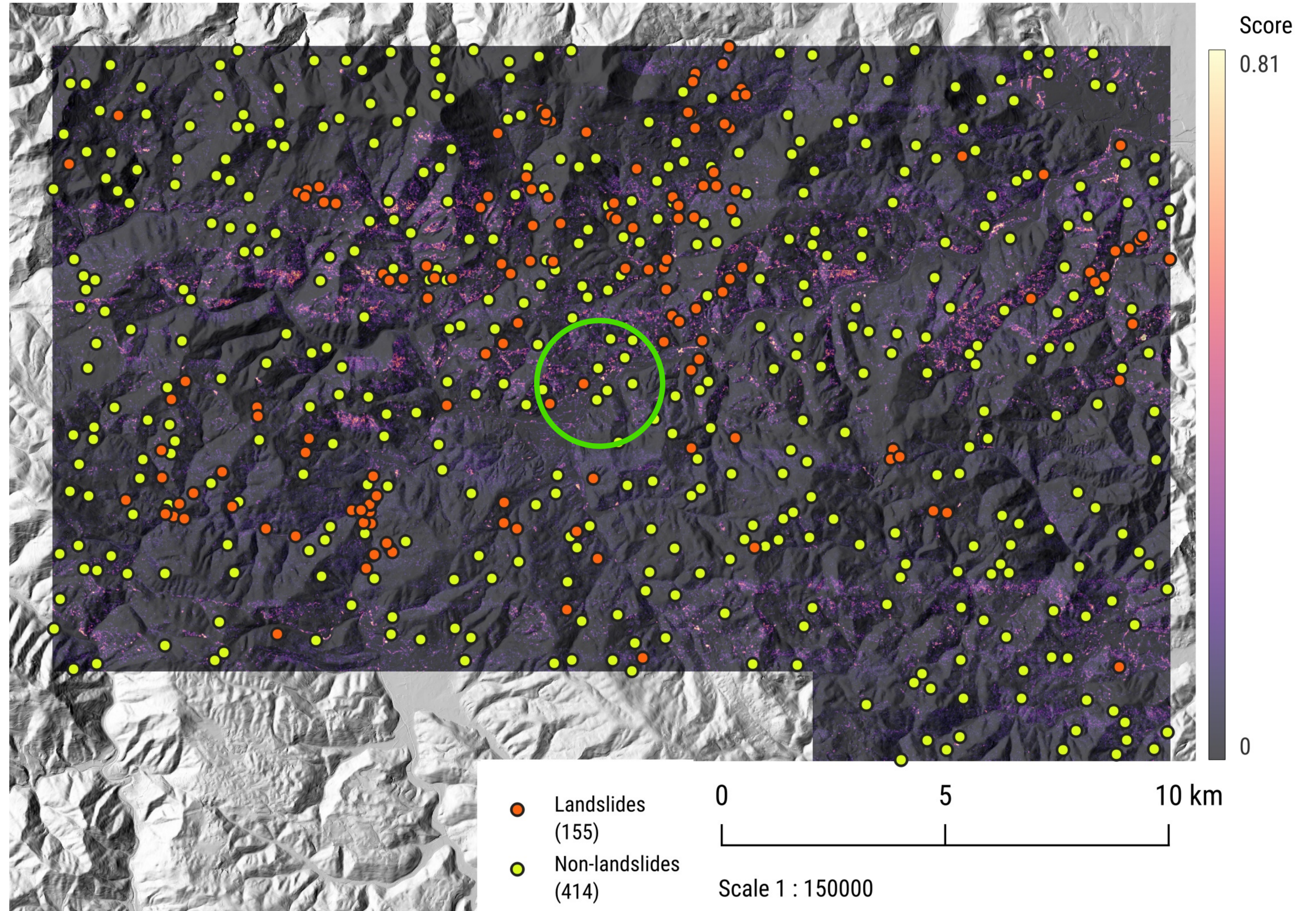


# CAN WE USE A ZERO-SHOT LEARNING MODEL FOR SHALLOW LANDSLIDE DETECTION?

*Could you have done better than RemoteCLIP?*

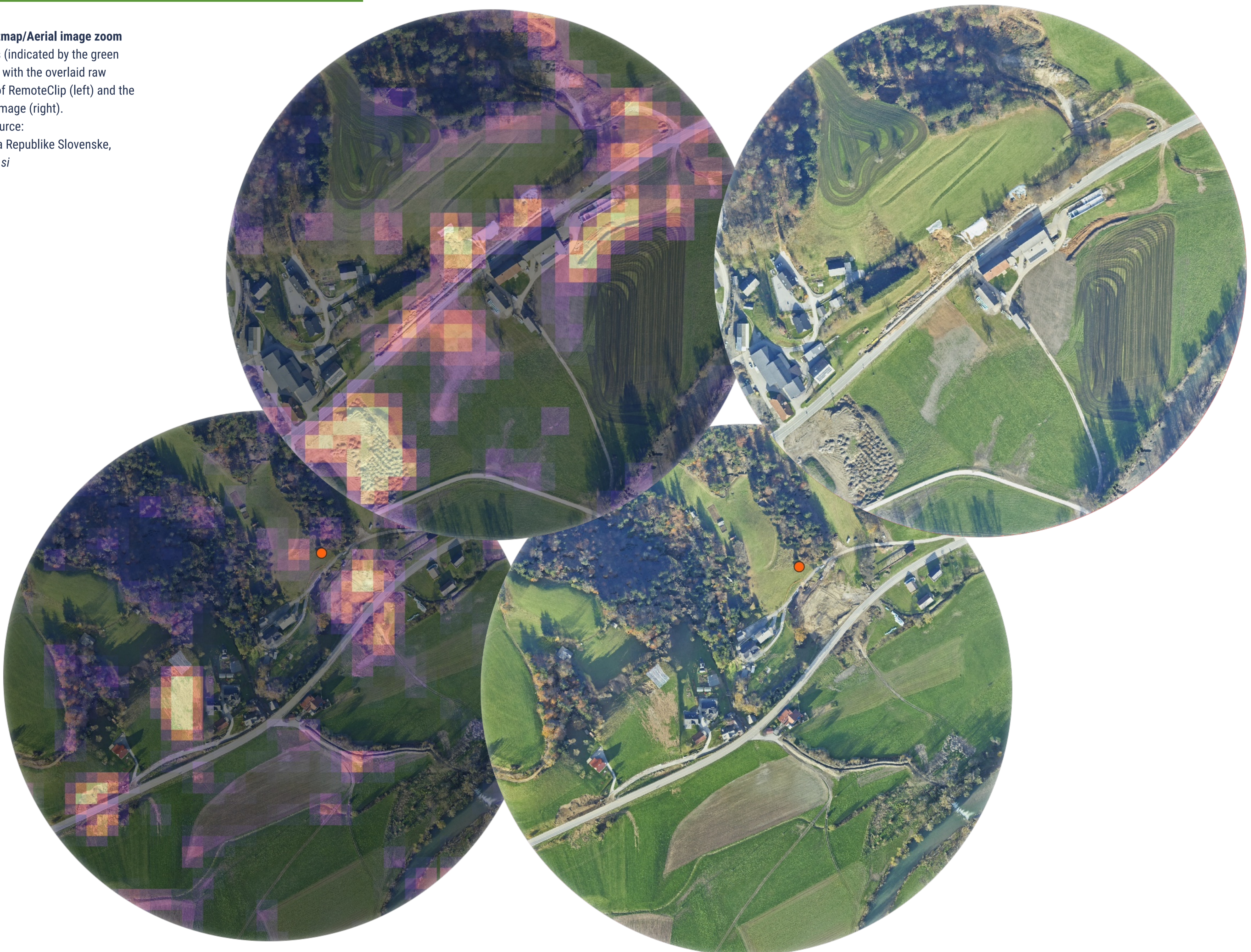


**Image 1: Heat map**  
Overview over the resulting RemoteCLIP output heat map with scores ranging from 0 to 0.81, including the distribution of landslide and non-landslide test points (right); and location of the study area within the country of Slovenia (above). The green circle indicates the area of the zooms below.



**CAN YOU CORRECTLY IDENTIFY ALL LANDSLIDES IN THE AERIAL IMAGES?**

**Images 2-4: Heatmap/Aerial image zoom**  
Two nearby areas (indicated by the green circle in Image 1) with the overlaid raw heatmap output of RemoteClip (left) and the plain input orthoimage (right).  
Aerial images' source: Geodetska uprava Republike Slovenije, Portal CLSS, [cls.si](http://cls.si)



[meetingorganizer.copernicus.org/EGU26/EGU26-12073.html](http://meetingorganizer.copernicus.org/EGU26/EGU26-12073.html)



FRIEDRICH-SCHILLER-  
UNIVERSITÄT  
JENA