

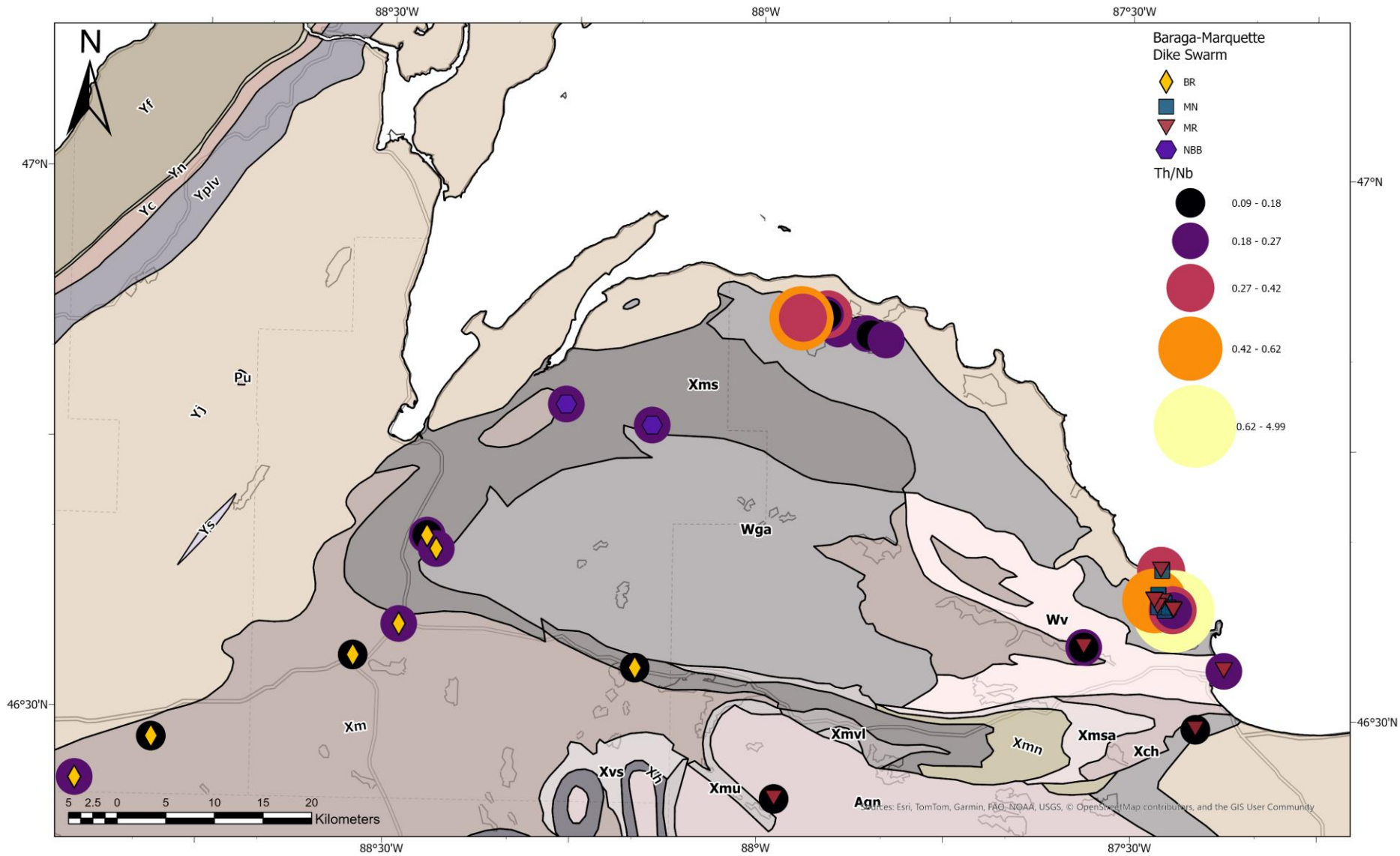
# **Building upon the paleomagnetic history of mafic intrusions in the pre-North American Mid-Continent Rift system, Western Upper Peninsula of Michigan.**

**GABRIEL AHRENDT<sup>1</sup>, Miah Mol<sup>1</sup>, Leonid Surovitskii<sup>1</sup>, and  
Aleksy Smirnov<sup>1</sup>.**

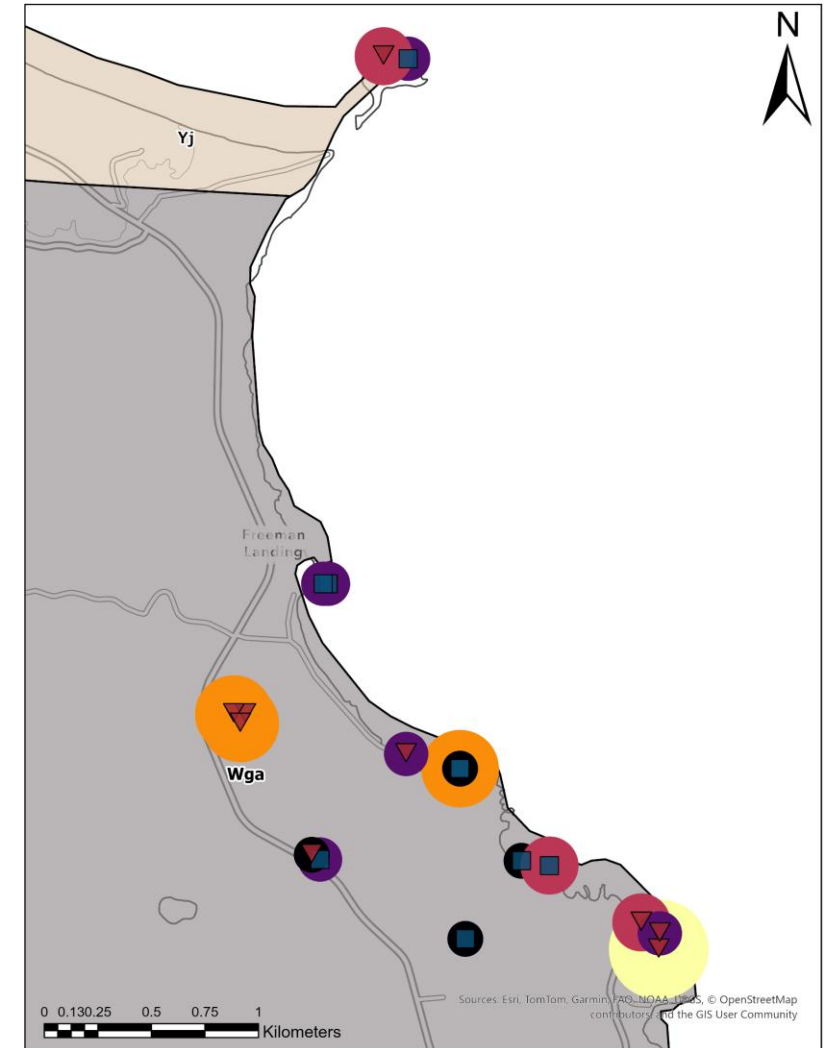
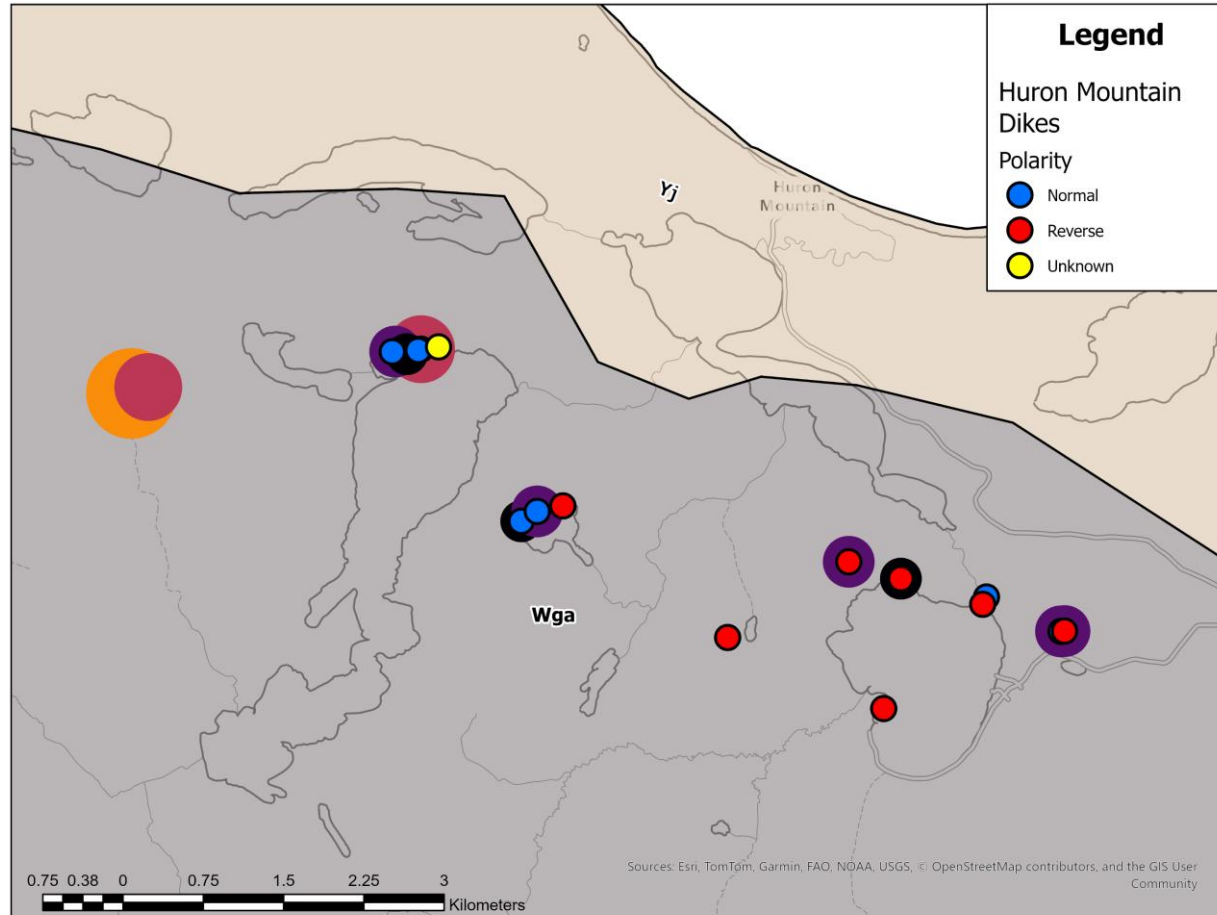
<sup>1</sup> Department of Geological and Mining Engineering and Sciences,  
Michigan Technological University, Houghton, MI 49931, United States  
of America

**Supplementary materials**

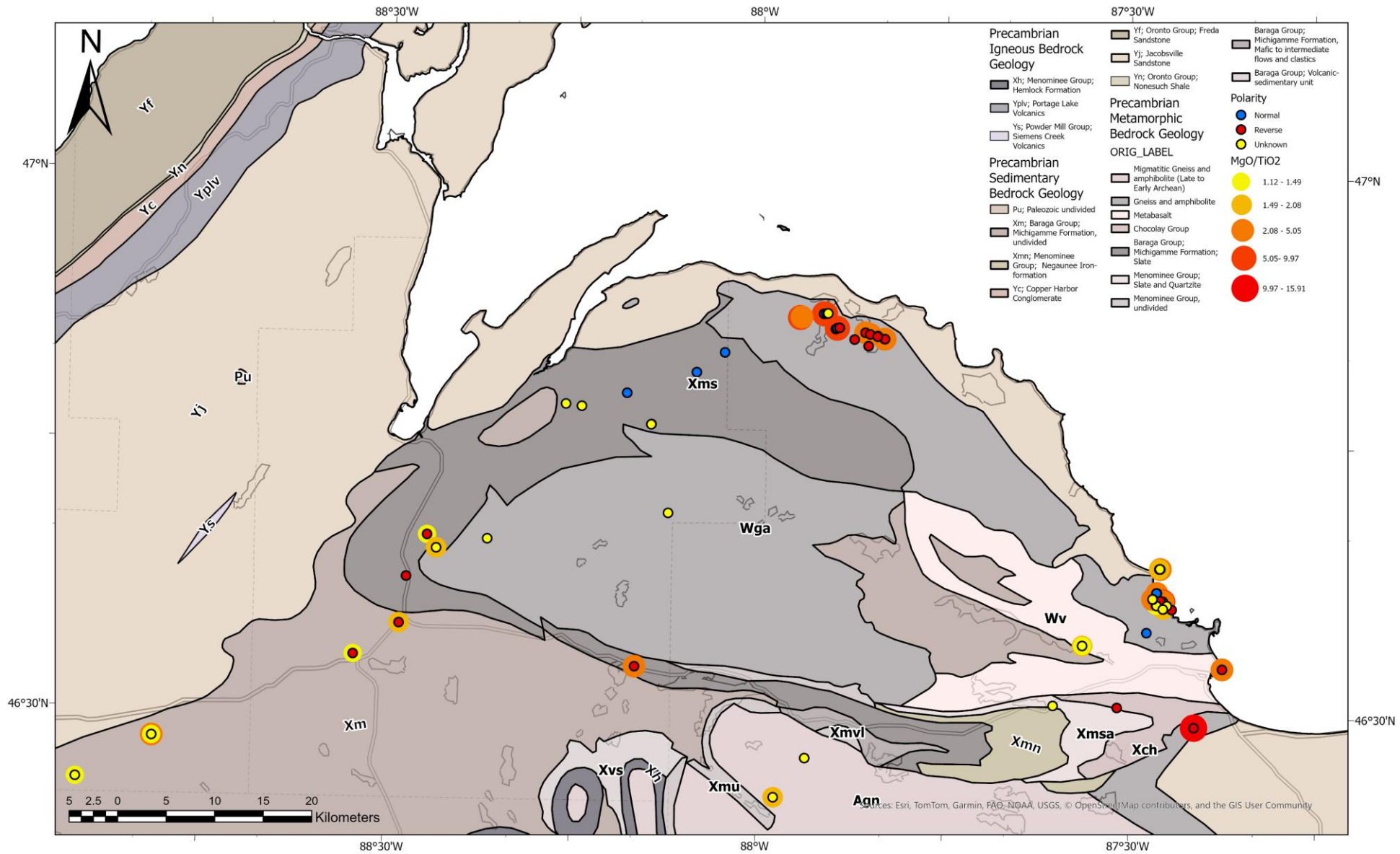
# Th/Nb ratio map of dikes



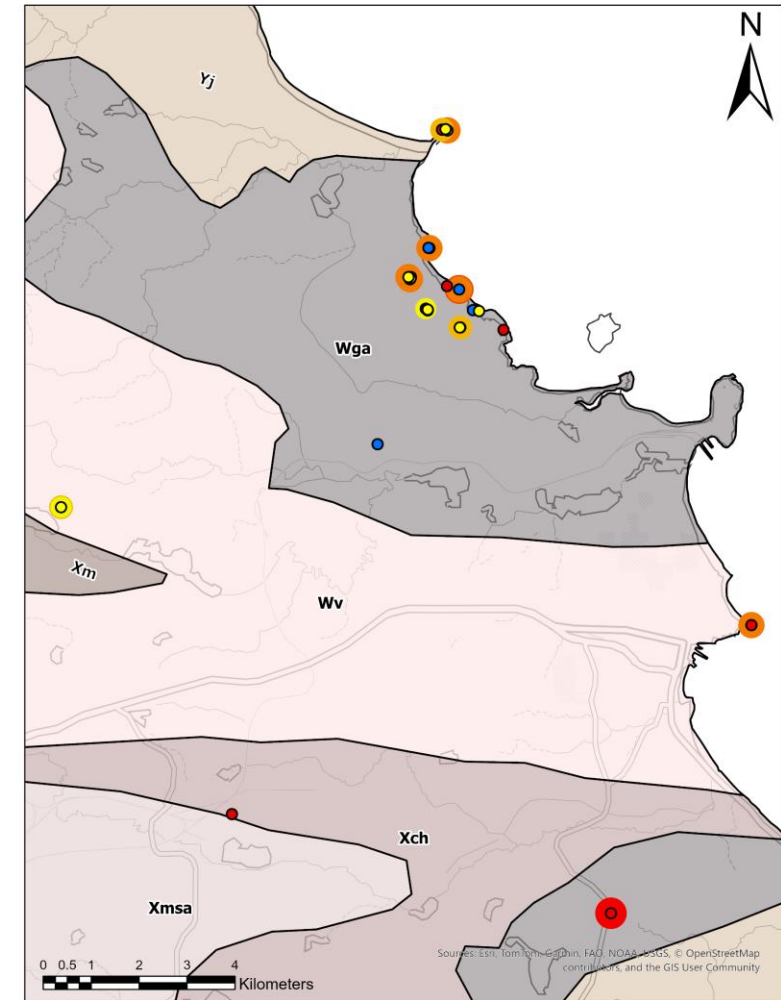
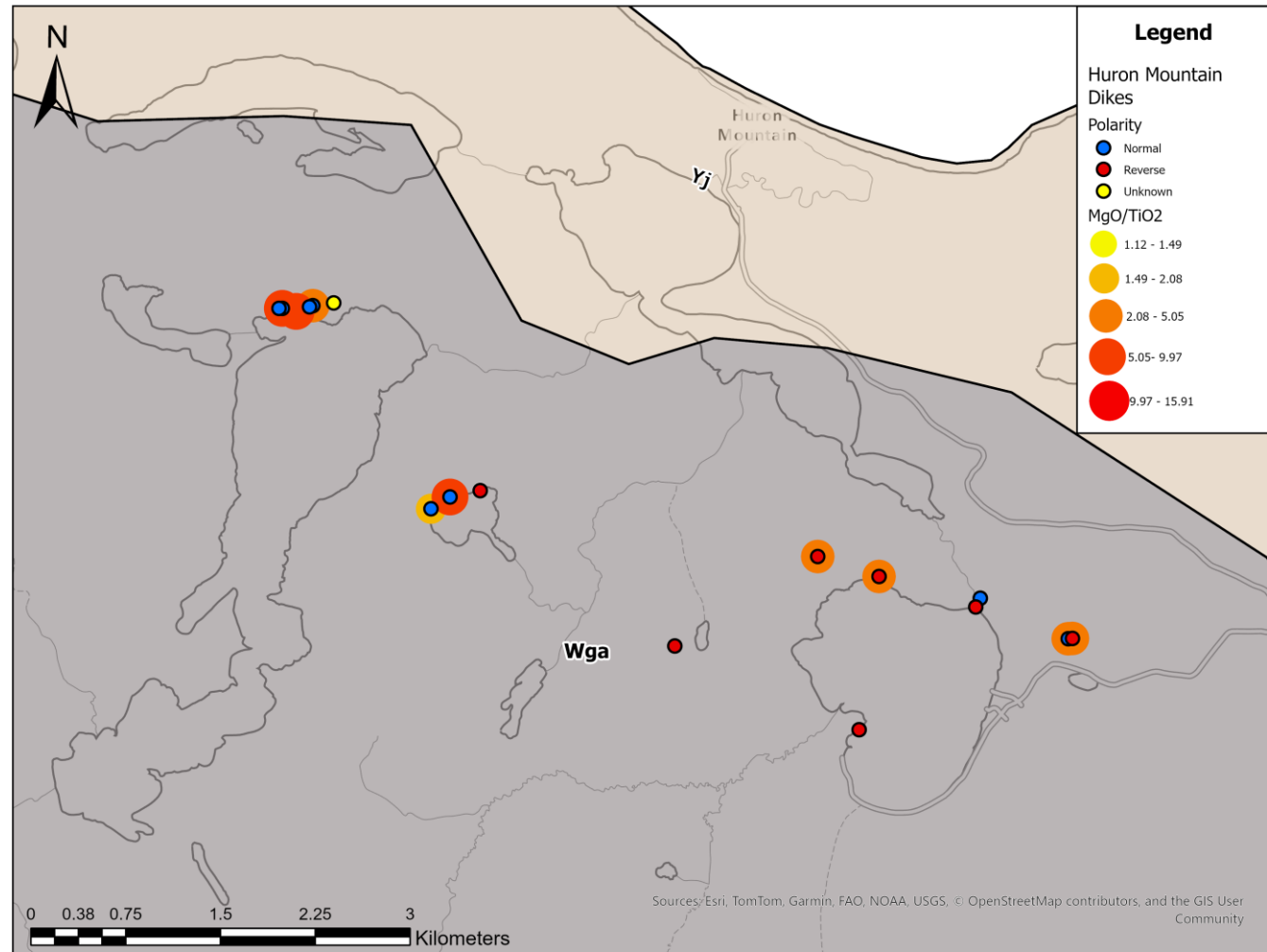
# Th/Nb ratio map of dikes



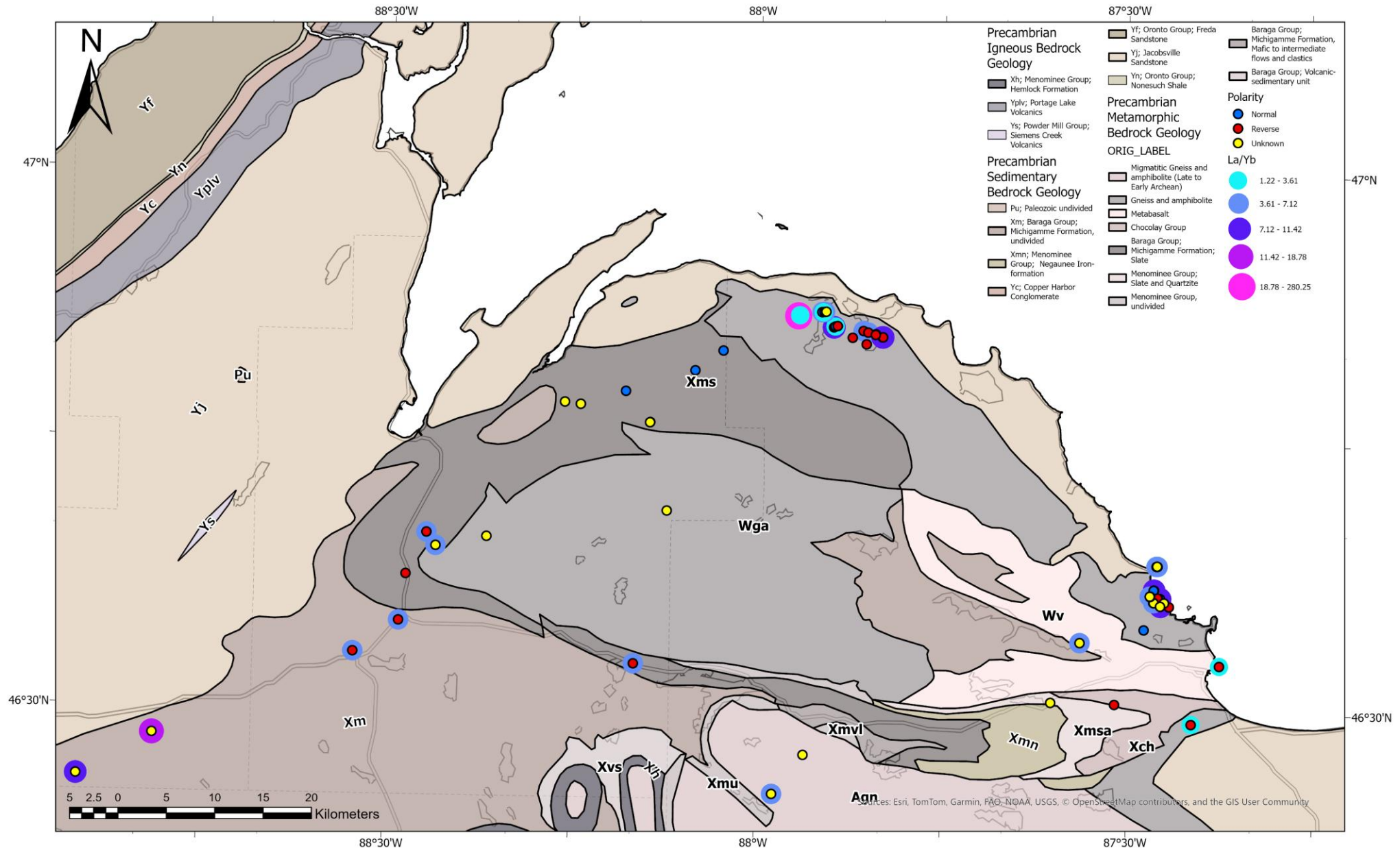
# MgOTiO<sup>2</sup> / TiO<sup>2</sup> map of dikes



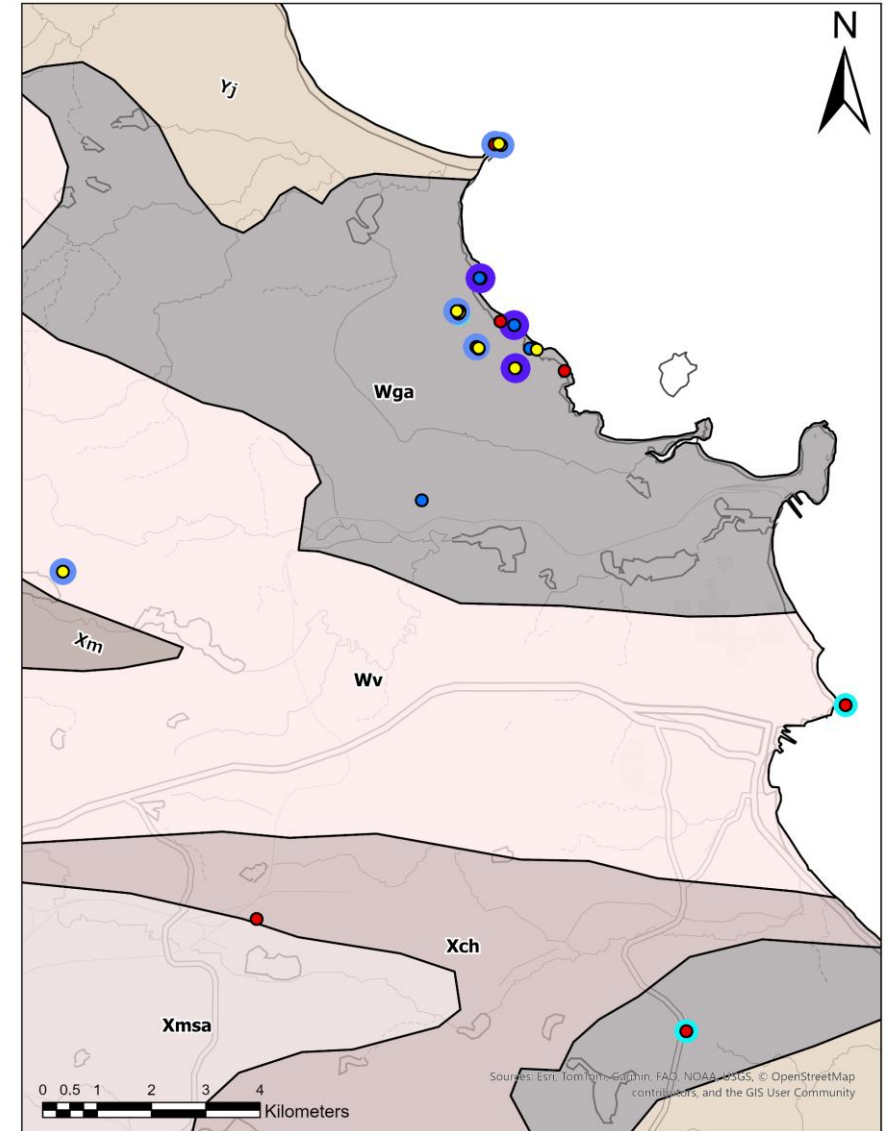
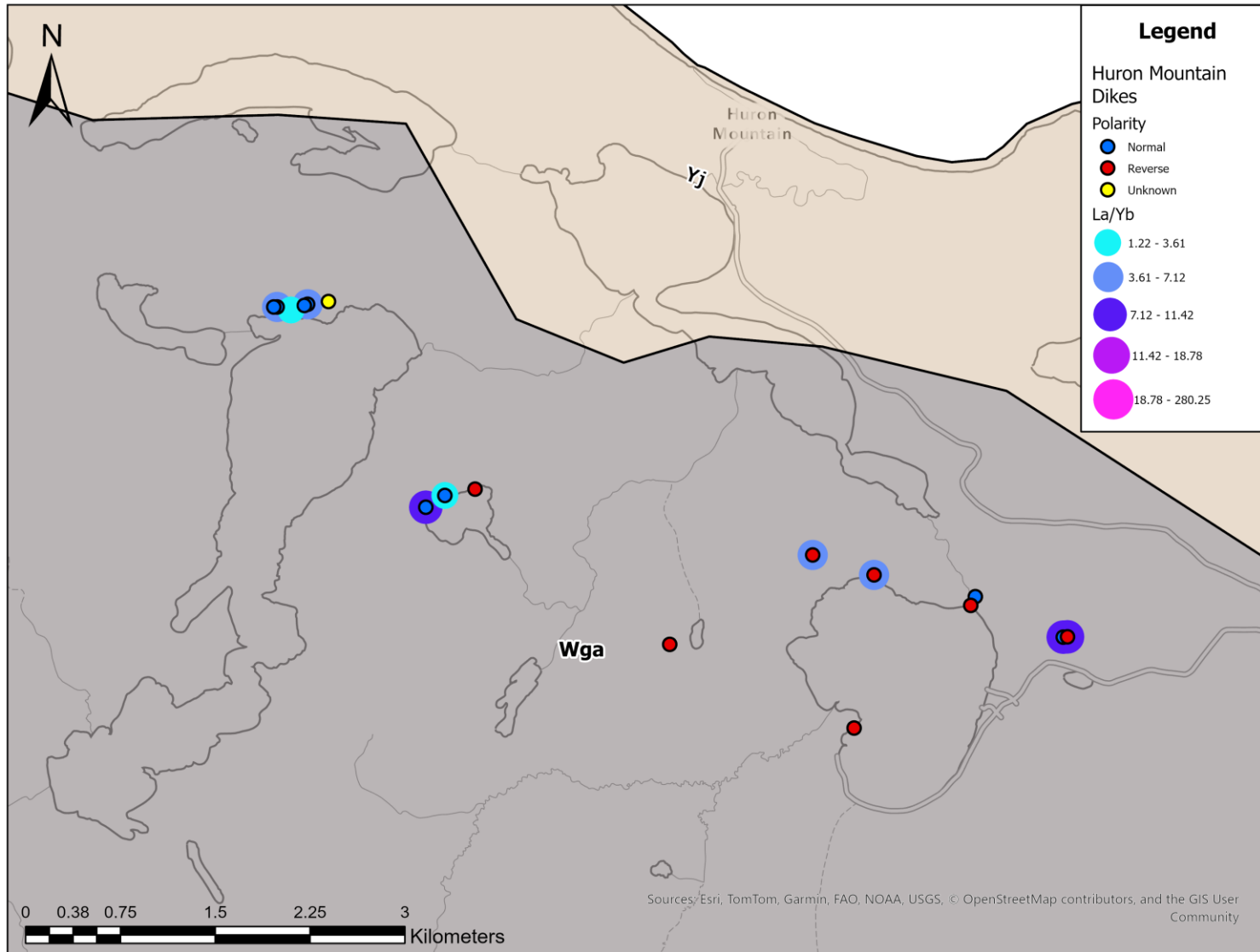
# MgOTiO<sup>2</sup> / TiO<sup>2</sup> map of dikes



# La/Yb ratio map of dikes

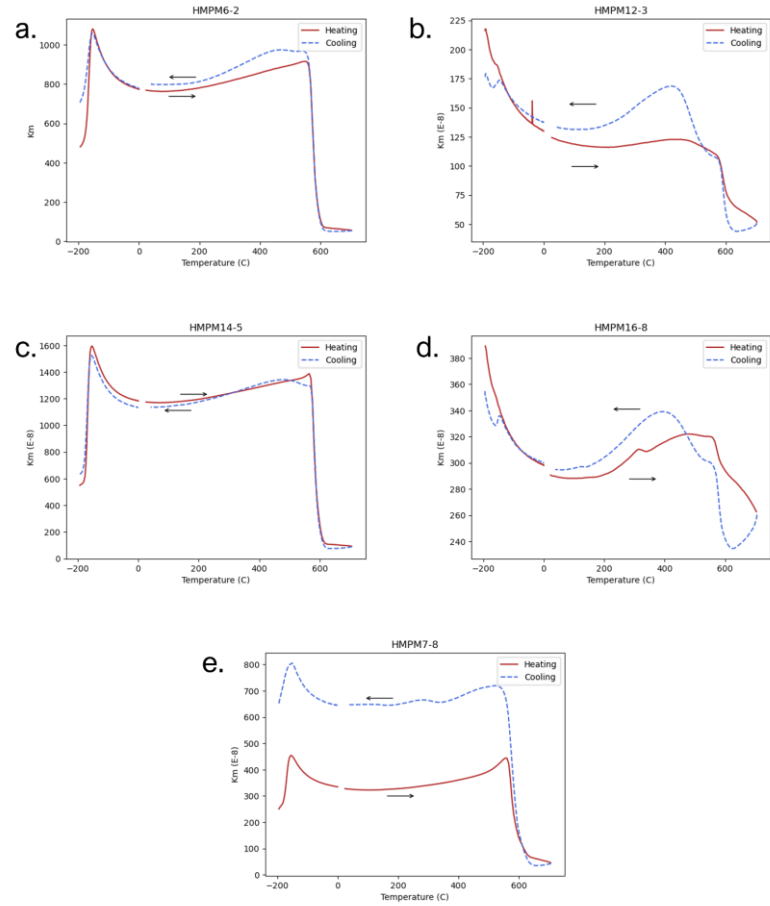


# La/Yb ratio map of dikes



# Select TMA curves of dikes

## Normal Polarity HMPM dikes



## Reverse Polarity HMPM dikes

