

Fewer Dust Storms, Greater Dust Concentration

The Arabian Peninsula Dust Paradox



Alaa Mhawish Udaya Bhaskar Gunturu Saud Alamoudi Sultan Alduaji
Jumaan Alqahtani

Sand and Dust Storm Regional Center, National Center for Meteorology; SciSynth Private Limited

1. Published evidence already points to fewer dust storms

Labban (2016)

Station climatology over Saudi Arabia shows decreases in dust-storm frequency across most cities.

Notaro et al. (2015)

A low-dust regime around 1998–2005 points to a decadal reduction phase in Arabian dust activity.

Yu et al. (2015)

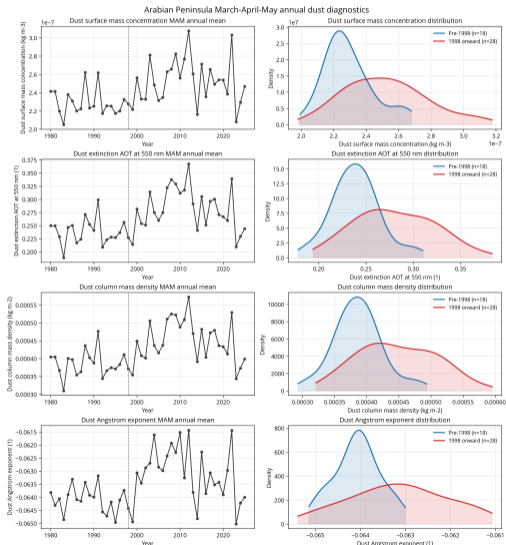
Dust activity varies by decade, so the post-1998 decline is part of a regime structure, not noise.

Liu et al. (2023)

Trend reversals across the Middle East support regime-dependent dust activity and changing storm behavior.

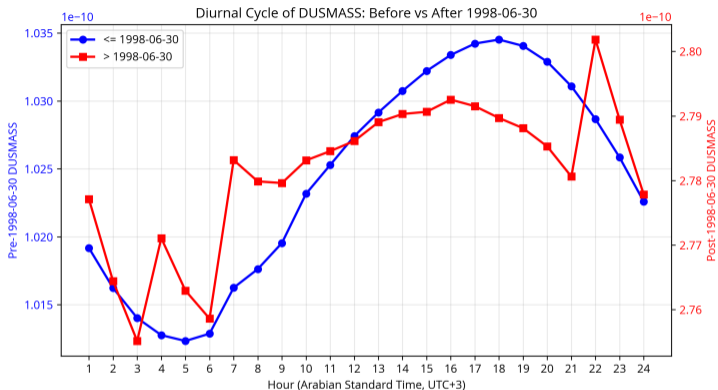
Consensus from the table: independent studies support declining dust-storm and regional outbreak activity after the late 1990s.

2. Yet the dust burden increased



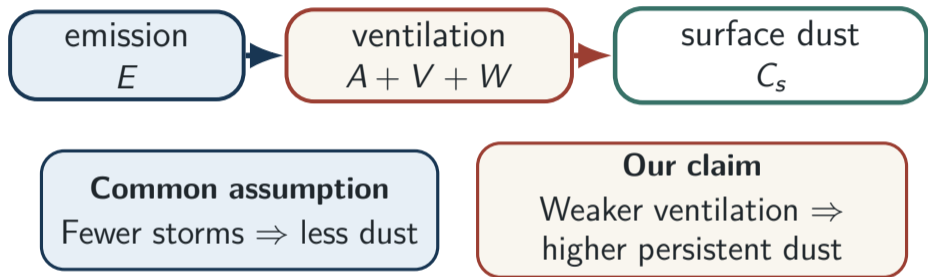
MAM dust diagnostics show higher surface dust mass extinction AOT, and column dust mass in the post-1998 regime

2. Yet the dust burden increased



Post-1998 dust remains elevated through the day: this is a **background accumulation signal**, not just isolated storm peaks.

3. Reframing the problem: dust concentration is a ventilation problem

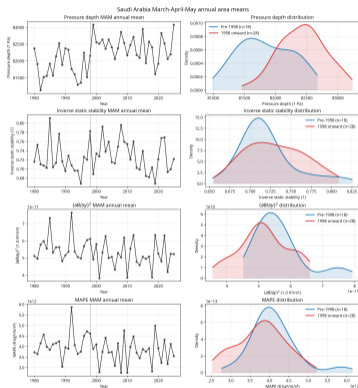


The paradox disappears once dust is treated as a budget and ventilation problem.

4. Dynamical core: an abrupt reduction in baroclinicity

Diagnostic used in the poster

$$\text{MAPE} \propto \frac{1}{\sigma} \left(\frac{\partial T}{\partial y} \right)^2 \Delta p$$

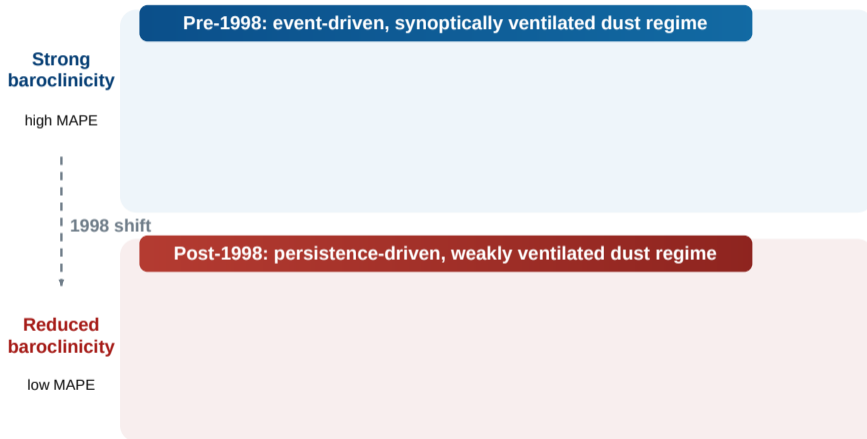


MAPE drops after 1998, mainly because the squared meridional temperature-gradient term collapses.

Interpretation: weaker thermal-wind shear, fewer transient eddies, fewer trough passages, fewer Shamal pressure-gradient episodes, and weaker synoptic flushing.

5. Mechanism: the same shift produces both outcomes

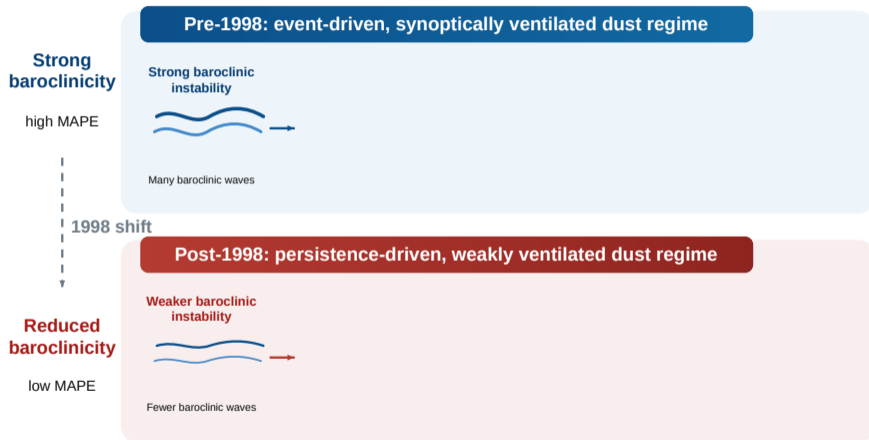
Mechanism: how reduced baroclinicity increases persistent surface dust



Animated SVG sequence: sequential causal reveal from reduced baroclinicity to persistent surface dust accumulation.

5. Mechanism: the same shift produces both outcomes

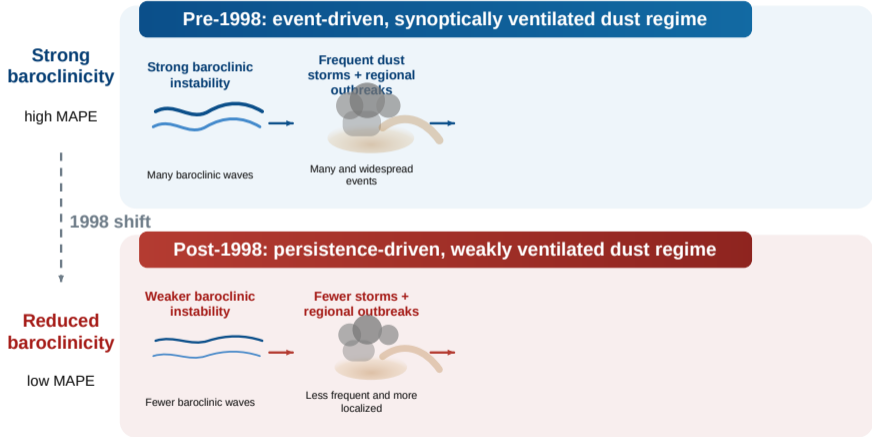
Mechanism: how reduced baroclinicity increases persistent surface dust



Animated SVG sequence: sequential causal reveal from reduced baroclinicity to persistent surface dust accumulation.

5. Mechanism: the same shift produces both outcomes

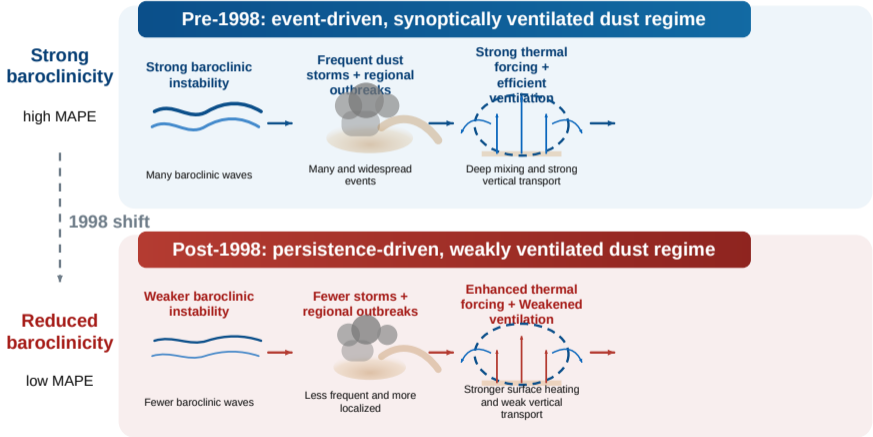
Mechanism: how reduced baroclinicity increases persistent surface dust



Animated SVG sequence: sequential causal reveal from reduced baroclinicity to persistent surface dust accumulation.

5. Mechanism: the same shift produces both outcomes

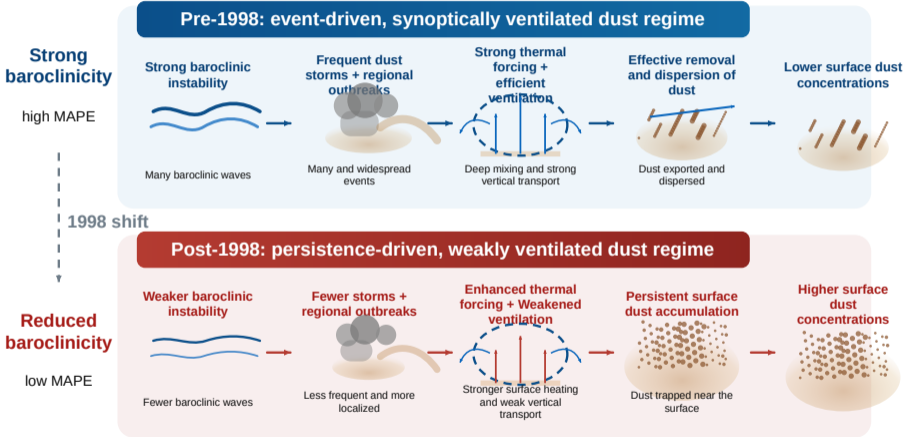
Mechanism: how reduced baroclinicity increases persistent surface dust



Animated SVG sequence: sequential causal reveal from reduced baroclinicity to persistent surface dust accumulation.

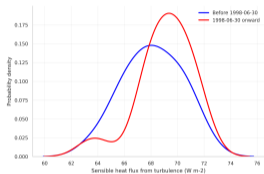
5. Mechanism: the same shift produces both outcomes

Mechanism: how reduced baroclinicity increases persistent surface dust

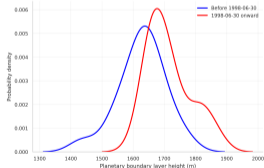


Animated SVG sequence: sequential causal reveal from reduced baroclinicity to persistent surface dust accumulation.

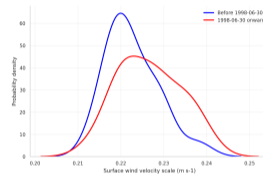
6. Boundary-layer evidence: more turbulence is not necessarily better ventilation



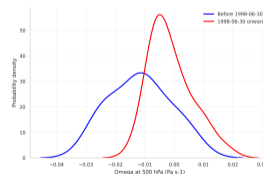
Higher sensible heating supports dry convective turbulence.



A deeper convective boundary layer can loft dust locally.



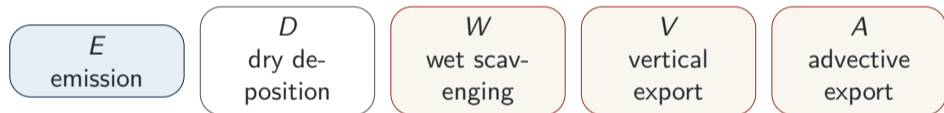
Friction velocity can still sustain near-surface emission and resuspension.



Weaker organized vertical motion implies weaker deep flushing.

7. The dust budget resolves the paradox

$$\frac{\partial C_s}{\partial t} = E - D - W - V - A$$



Reduced baroclinicity mainly weakens **wet scavenging, vertical export, and horizontal export**. It need not increase emission to increase surface dust.

8. Take-home message

Dust concentration is not only an emissions variable.

It is a ventilation-controlled variable.

The Arabian Peninsula dust paradox is best explained as a post-1998 transition from **event-driven ventilation** to **persistence-driven accumulation**.