

# Solid Earth

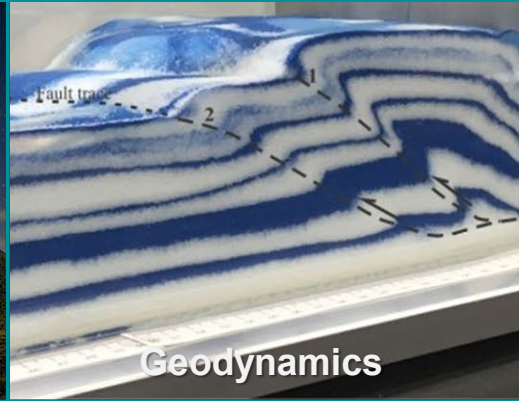
An interactive open-access journal of the European Geosciences Union



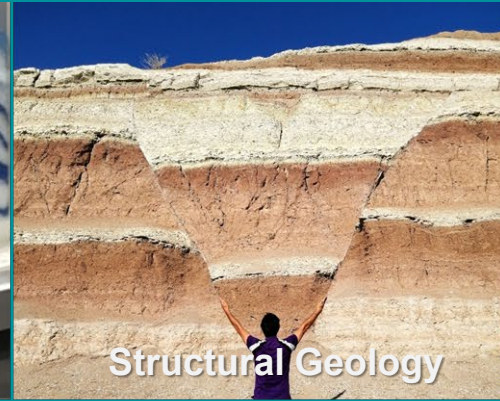
**Evolving Earth Surface**



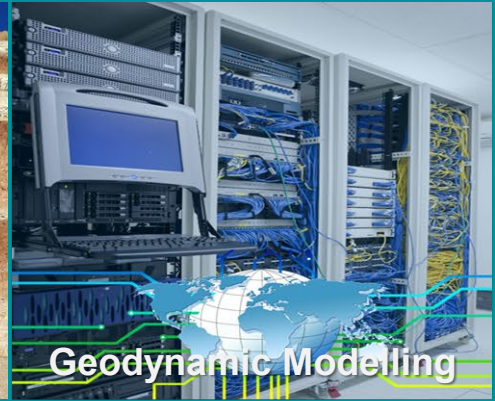
**Volcanology**



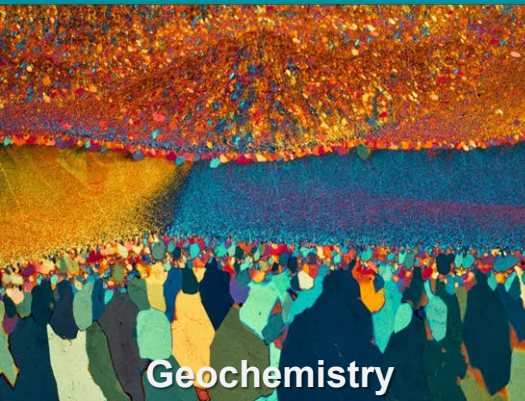
**Geodynamics**



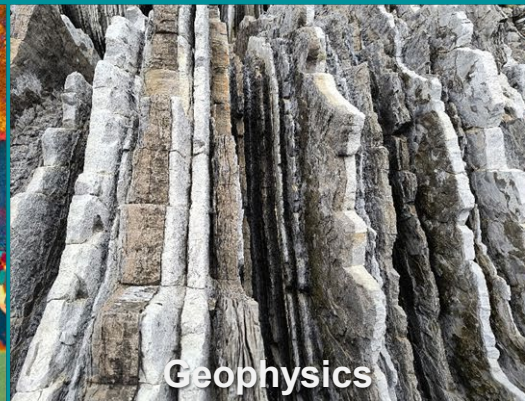
**Structural Geology**



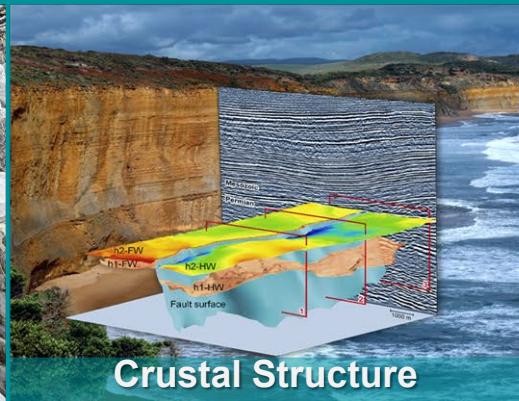
**Geodynamic Modelling**



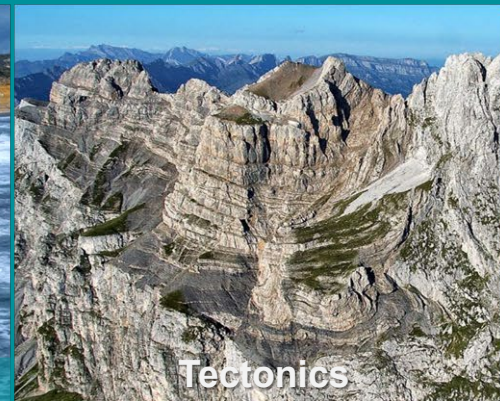
**Geochemistry**



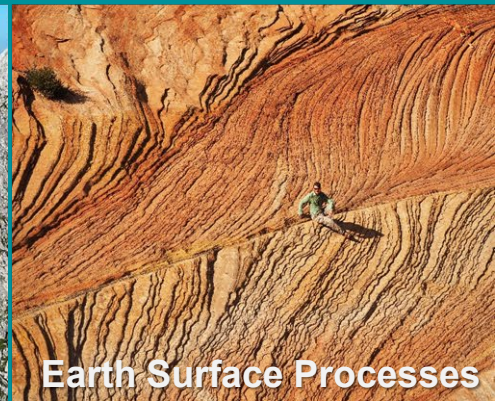
**Geophysics**



**Crustal Structure**



**Tectonics**



**Earth Surface Processes**



# Executive Editors team since 2025



| EGU.eu | EGU Journals | EGU Highlight Articles | Contact | Imprint |

**Lotte Krawczyk**  
(GFZ, Potsdam)



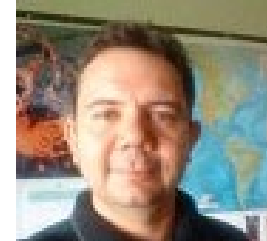
Geophysics

**Susanne Buiter**  
(GFZ, Potsdam)



Geodynamics

**Andrea Di Muro**  
(Université Lyon)



Volcanology

**Kei Ogata**  
(Università Genova)



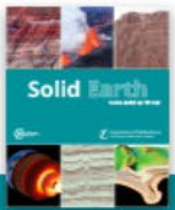
Sedimentology  
Soil

**Florian Fousseis**  
(RWTH Aachen)



Tectonics &  
Structural Geology





# Solid Earth Anniversary Collection



| EGU.eu | EGU Journals | EGU Highlight Articles | Contact | Imprint |



## 15 years Solid Earth celebration in 2025

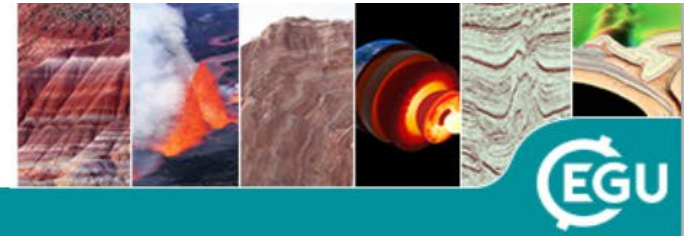


<https://se.copernicus.org/articles/collection18.html>





# 2026 we celebrate 25 years of OA publishing !



| EGU.eu | EGU Journals | EGU Highlight Articles | Contact | Imprint |

## Let's have a PICO

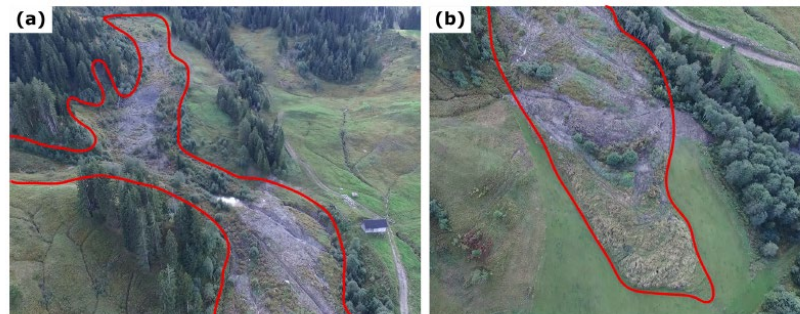
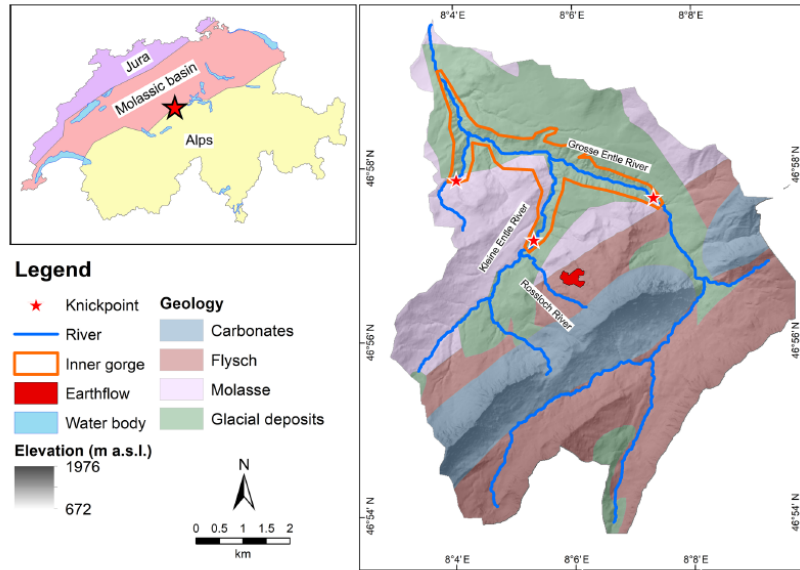
- today's session  
Thur, PICO spot 5, 15:45-16:15 h



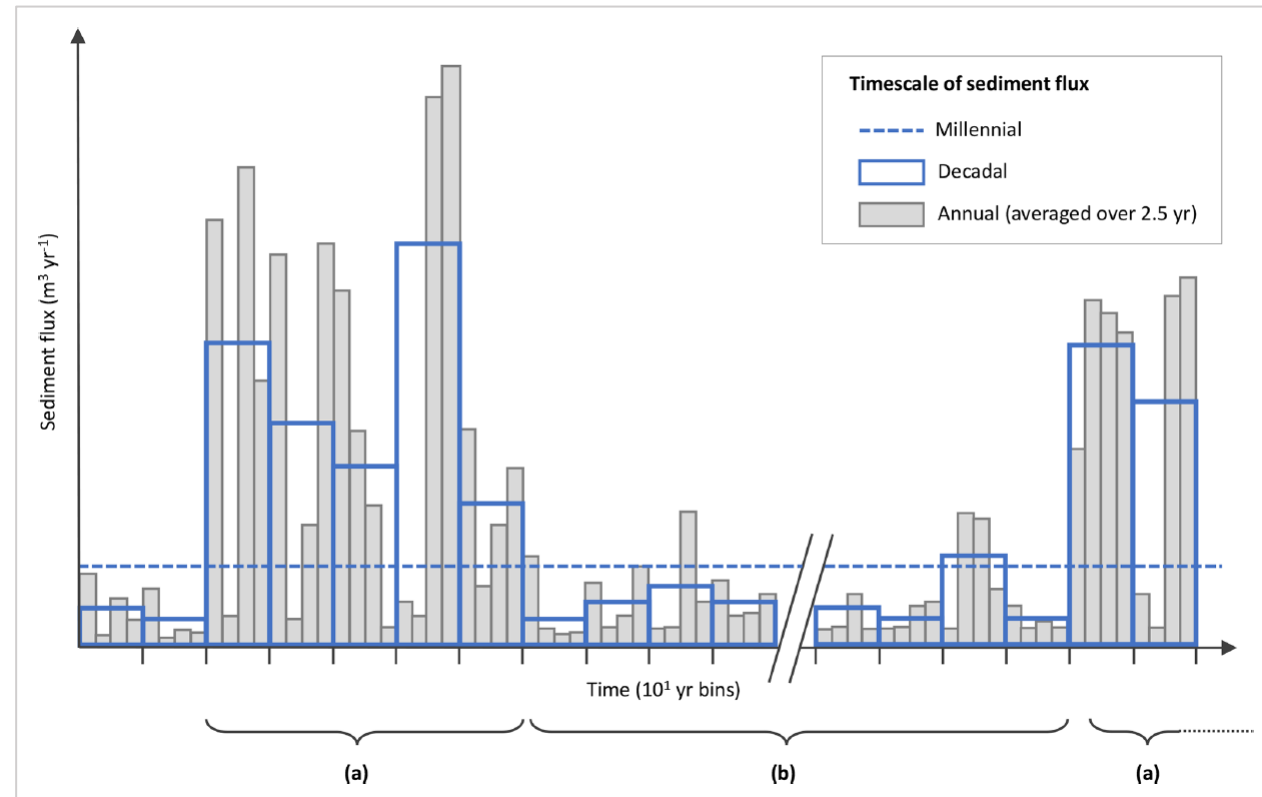
## ...and a drink !

- reception  
Thur, PICO spot 5, 18 h



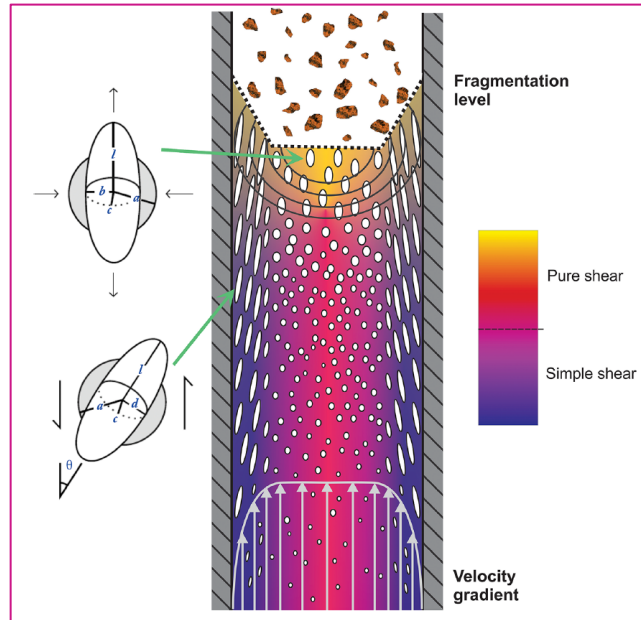


Alpine river catchment Schimbrig, prone to landslides

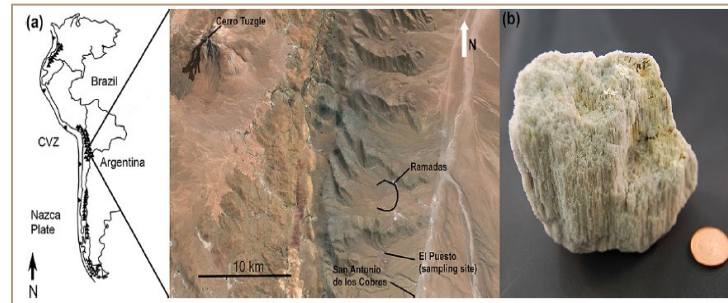


time-scales of sediment fluxes

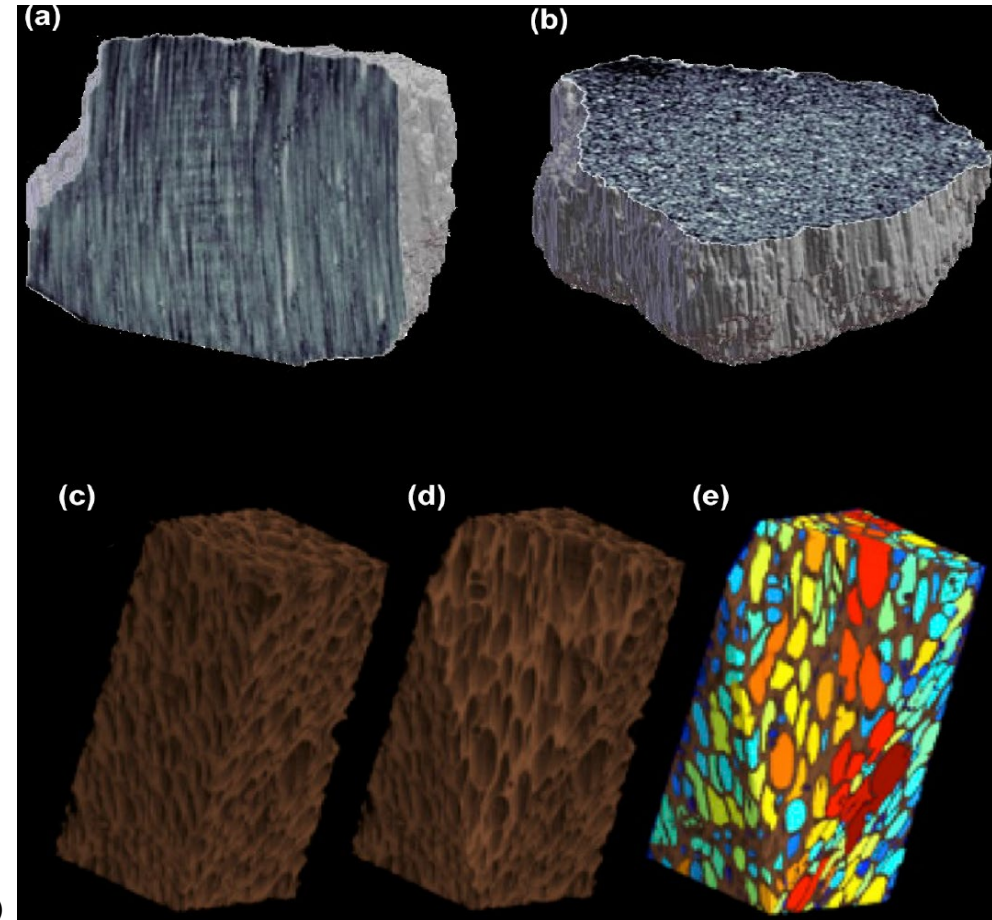




model for eruptive shearing



sampling in Argentina



Neutron computed tomography reconstruction of tube pumice (internal structure revealed)



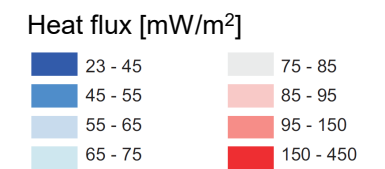
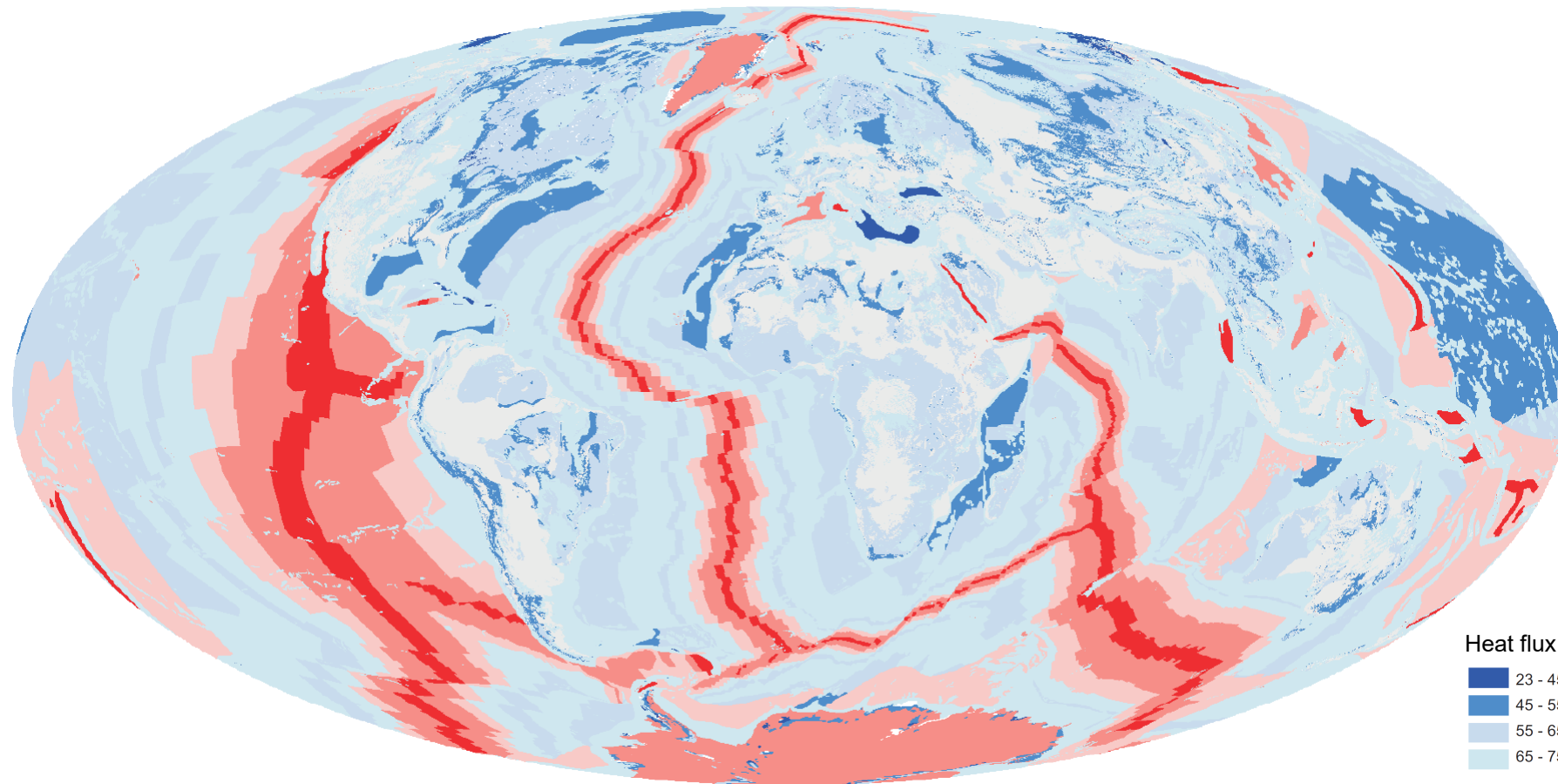
Dingwell et al., 2016  
Eruptive shearing of tube pumice  
<https://doi.org/10.5194/se-7-1383-2016>



# Global Heat Flux, 2010

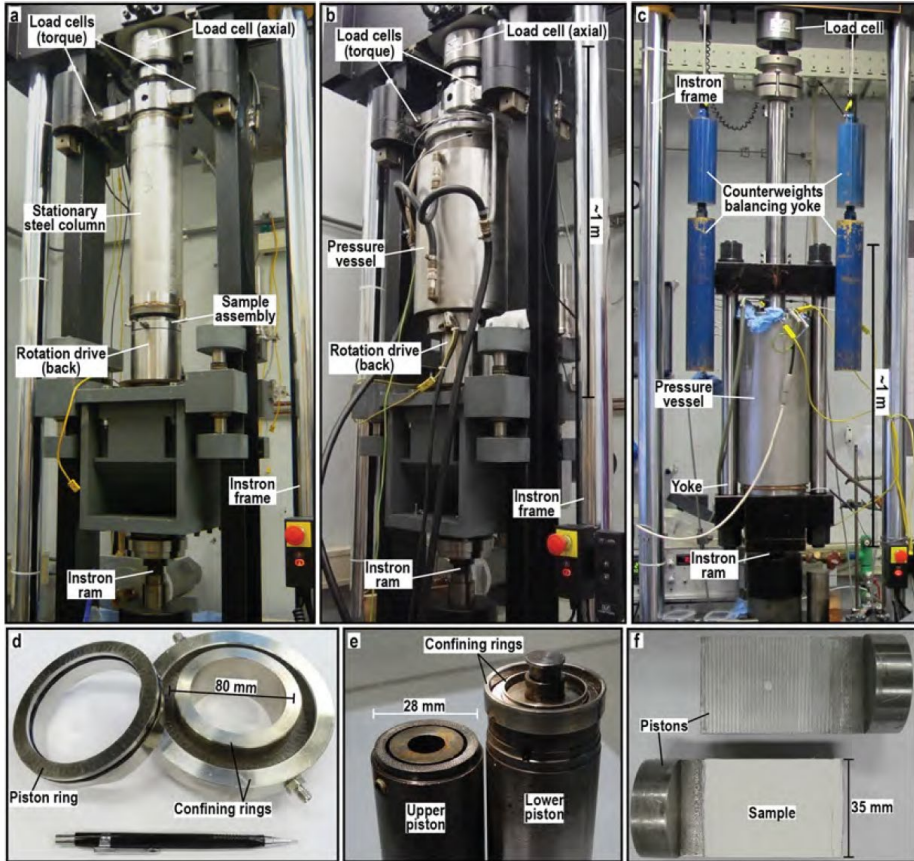


| EGU.eu | EGU Journals | EGU Highlight Articles | Contact | Imprint |

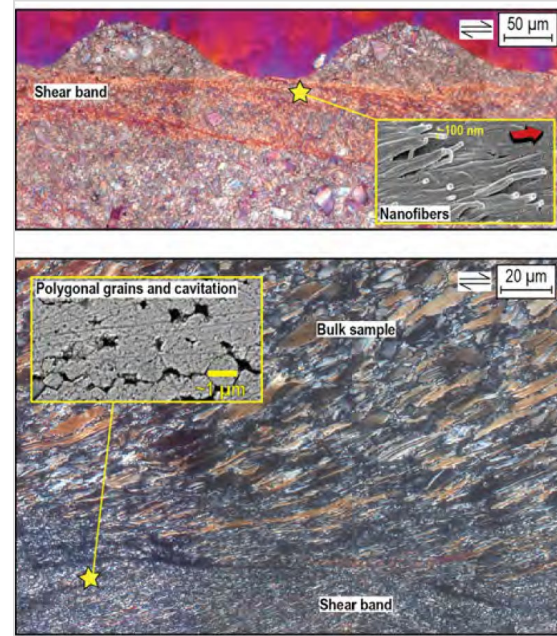


Davies & Davies, 2010  
Earth's Surface Heat Flux  
<https://se.copernicus.org/articles/1/5/2010/>

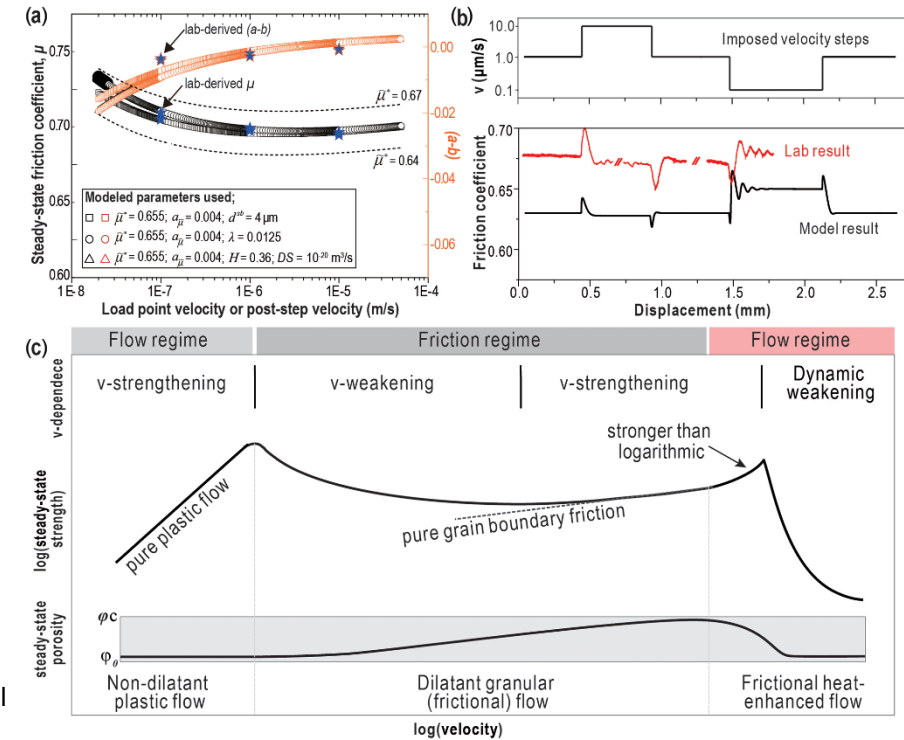
<http://www.solid-earth.net>



experimental apparatus



shear experiment



critical sliding model

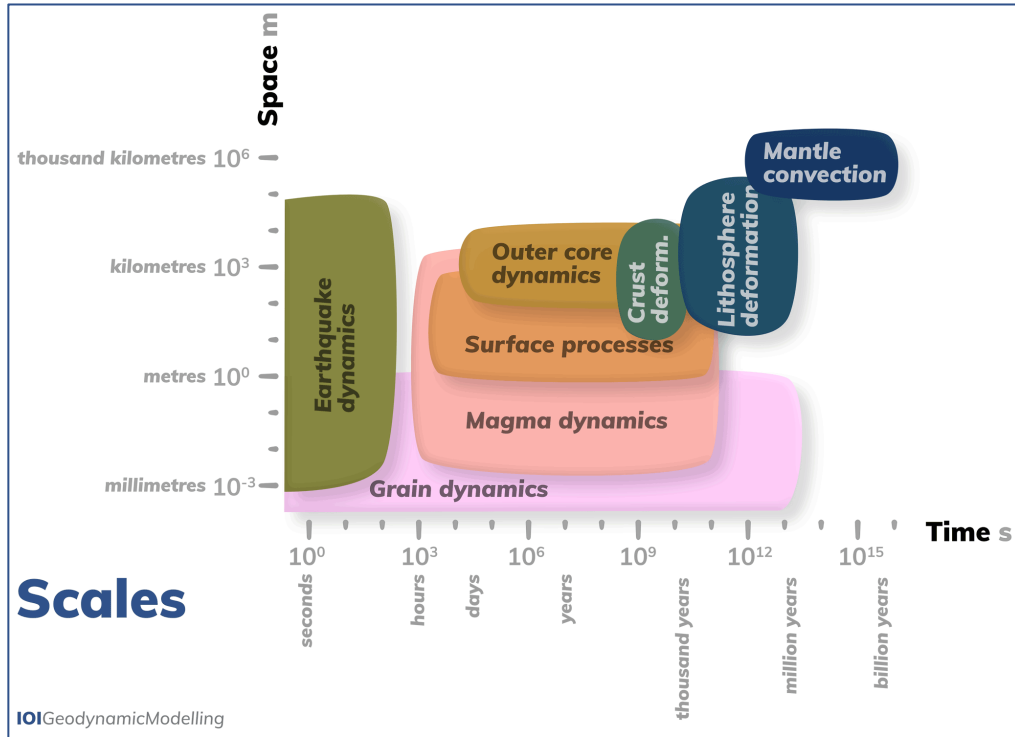




# How to design, interpret, and communicate numerical studies of the solid Earth, 2022

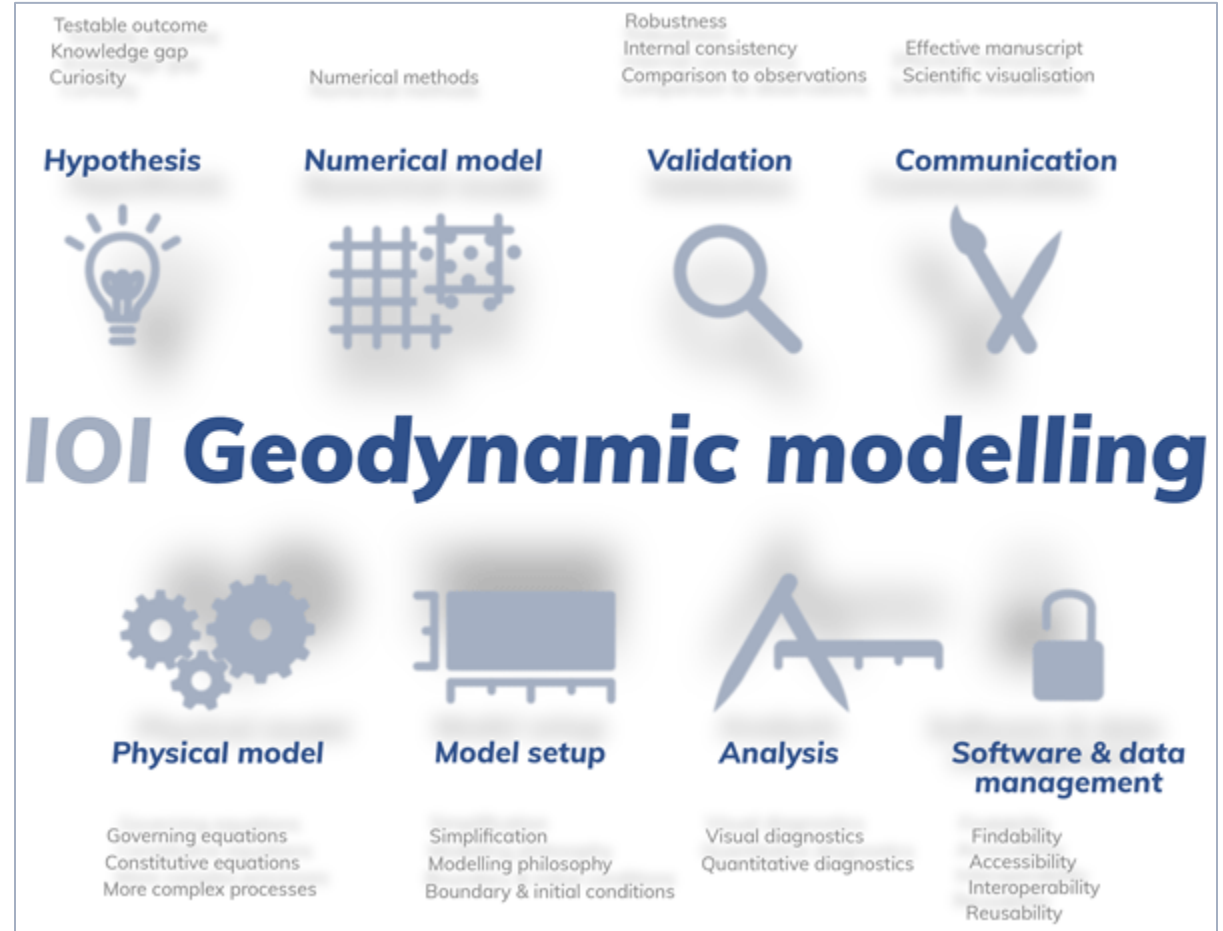


| EGU.eu | EGU Journals | EGU Highlight Articles | Contact | Imprint |

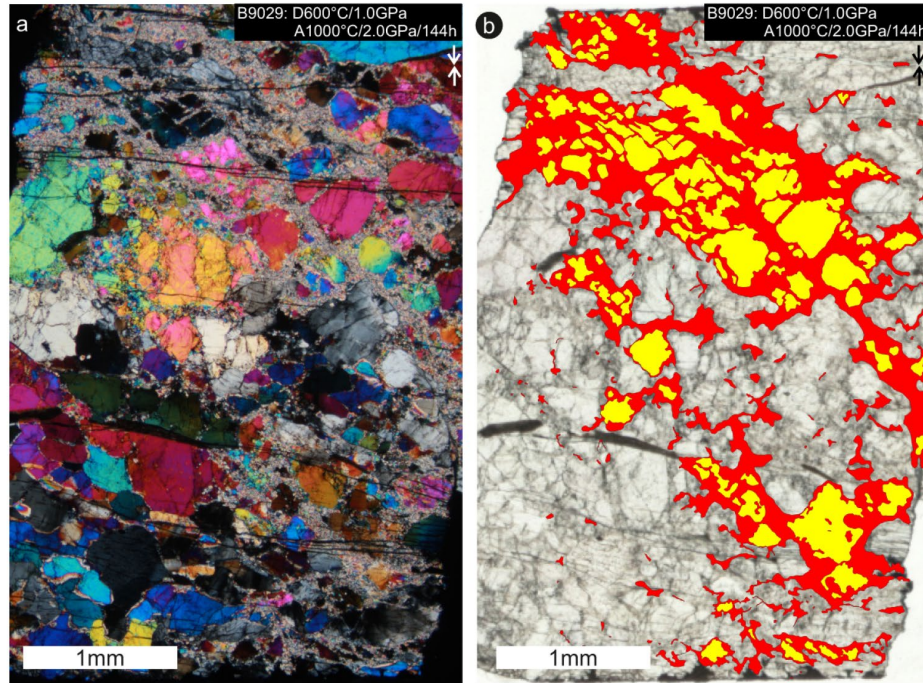


the challenge

graphical abstract

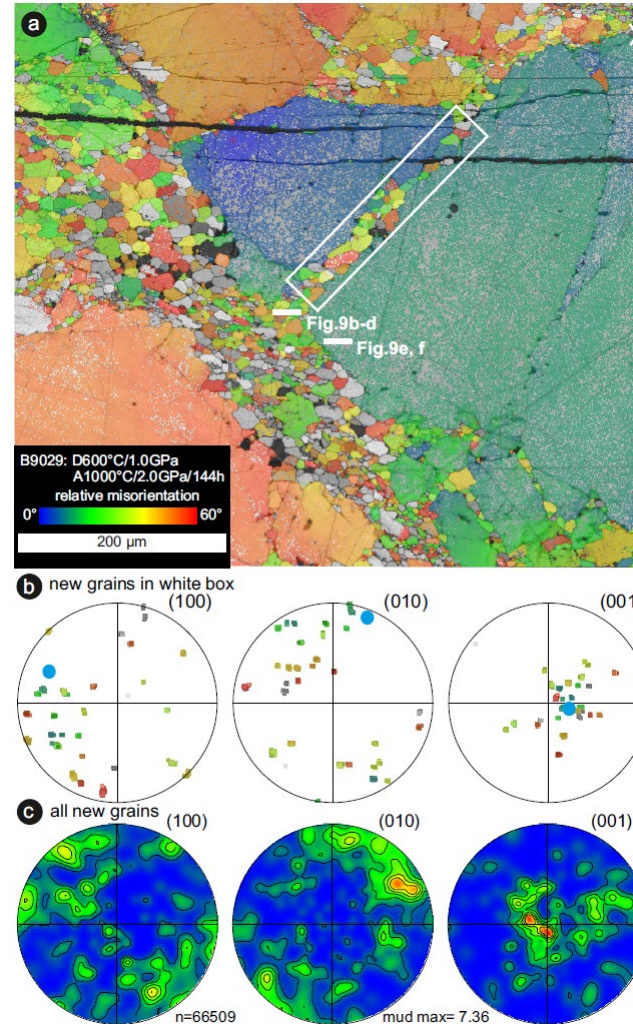


van Zelst et al., 2022  
101 geodynamic modelling  
<https://doi.org/10.5194/se-13-583-2022>



Olivine sample from Norway

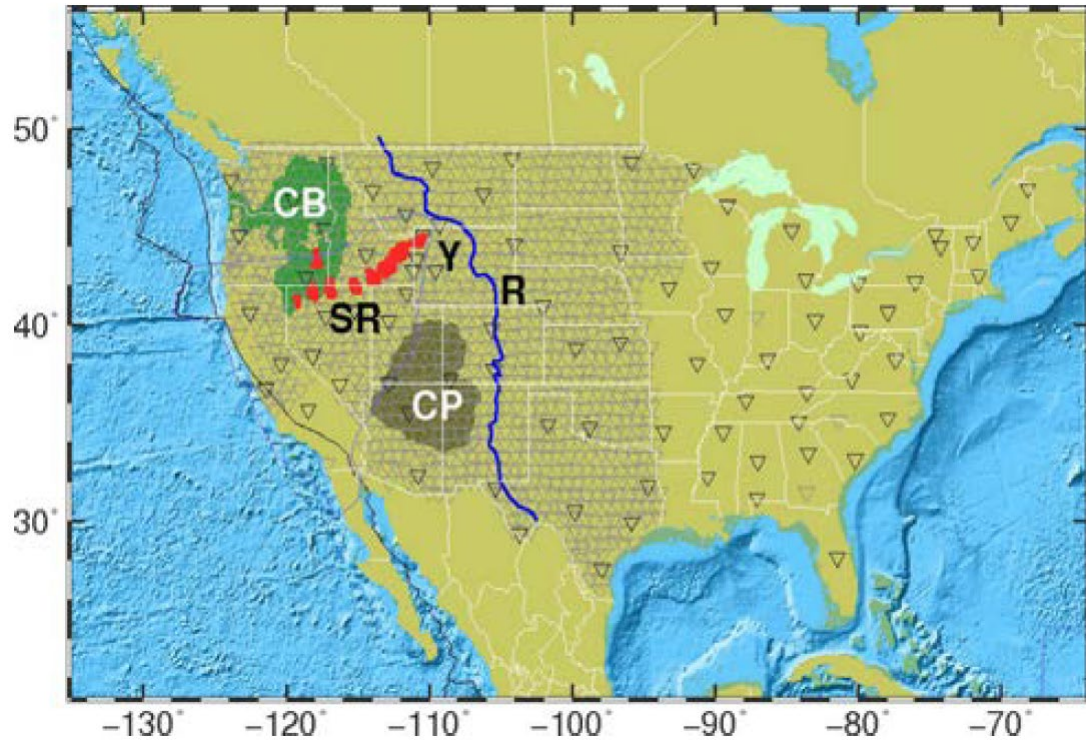
red: area occupied by new grains (after deformation and annealing)



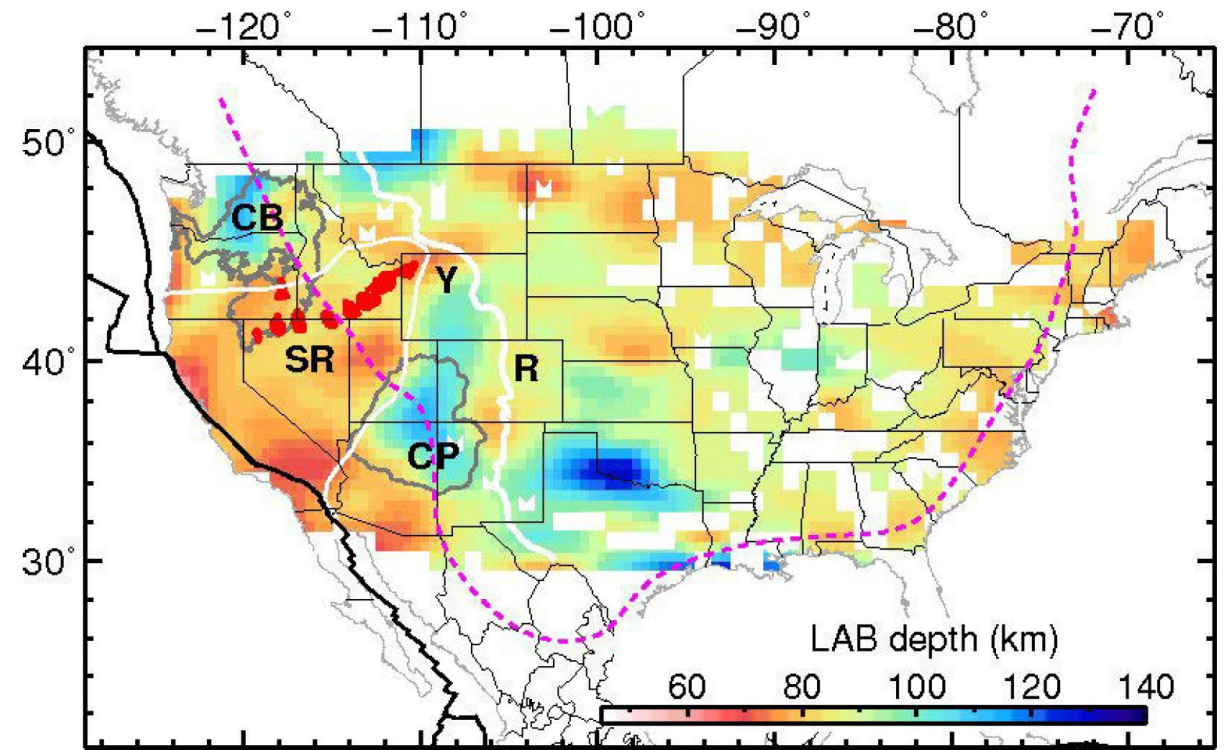
development of new grains (after deformation and annealing)



Trepmann et al., 2013  
 Experimental deformation and recrystallization of olivine  
<https://doi.org/10.5194/se-4-423-2013>



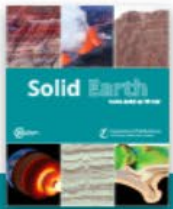
seismic stations in W-half of the USA



Lithosphere-Asthenosphere (LAB) depth map



Kumar et al., 2012  
 The lithosphere-asthenosphere boundary observed with USArray  
<https://doi.org/10.5194/se-3-149-2012>



# Topical input is handled by different Editorial Teams



| EGU.eu | EGU Journals | EGU Highlight Articles | Contact | Imprint |

**EGU** European Geosciences Union

**Solid Earth**

ARTICLES & PREPRINTS ▾ SUBMISSION POLICIES ▾ PEER REVIEW ▾ EDITORIAL BOARD ABOUT ▾ EGU PUBLICATIONS ↗

## Crustal structure and composition

Home / Crustal structure and composition

Relevant editorial teams:

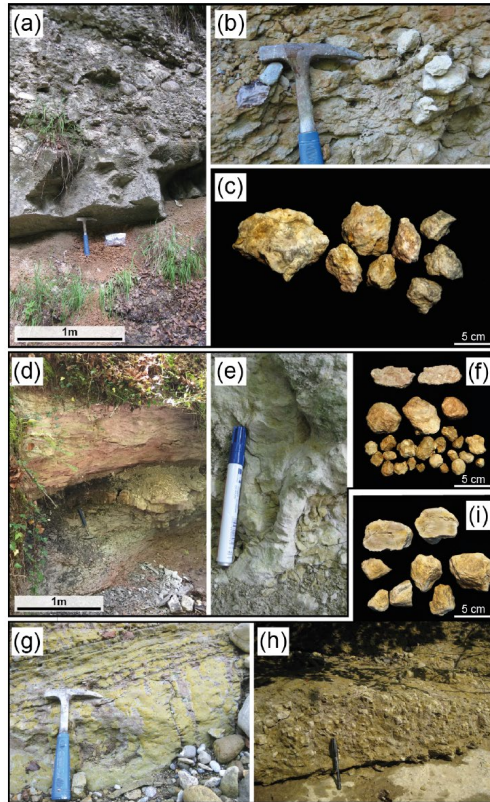
- **Geochemistry, mineralogy, petrology, and volcanology** | Di Muro, Currenti, Lissenberg, Longo, and Pinel
- **Seismics, seismology, paleoseismology, geoelectrics, and electromagnetics** | Krawczyk, Bianchi, Currenti, Malinowski, Pilia, and Werban
- **Stratigraphy, sedimentology, geomorphology, morphotectonics, and palaeontology** | Stroeven, Gardin, Ogata, and Oliva
- **Geodynamics, geodesy, gravity, and geomagnetism** | Buiter, Aubert, Dannberg, Gerya, Lewi, Manda, and McClusky

### Recent papers

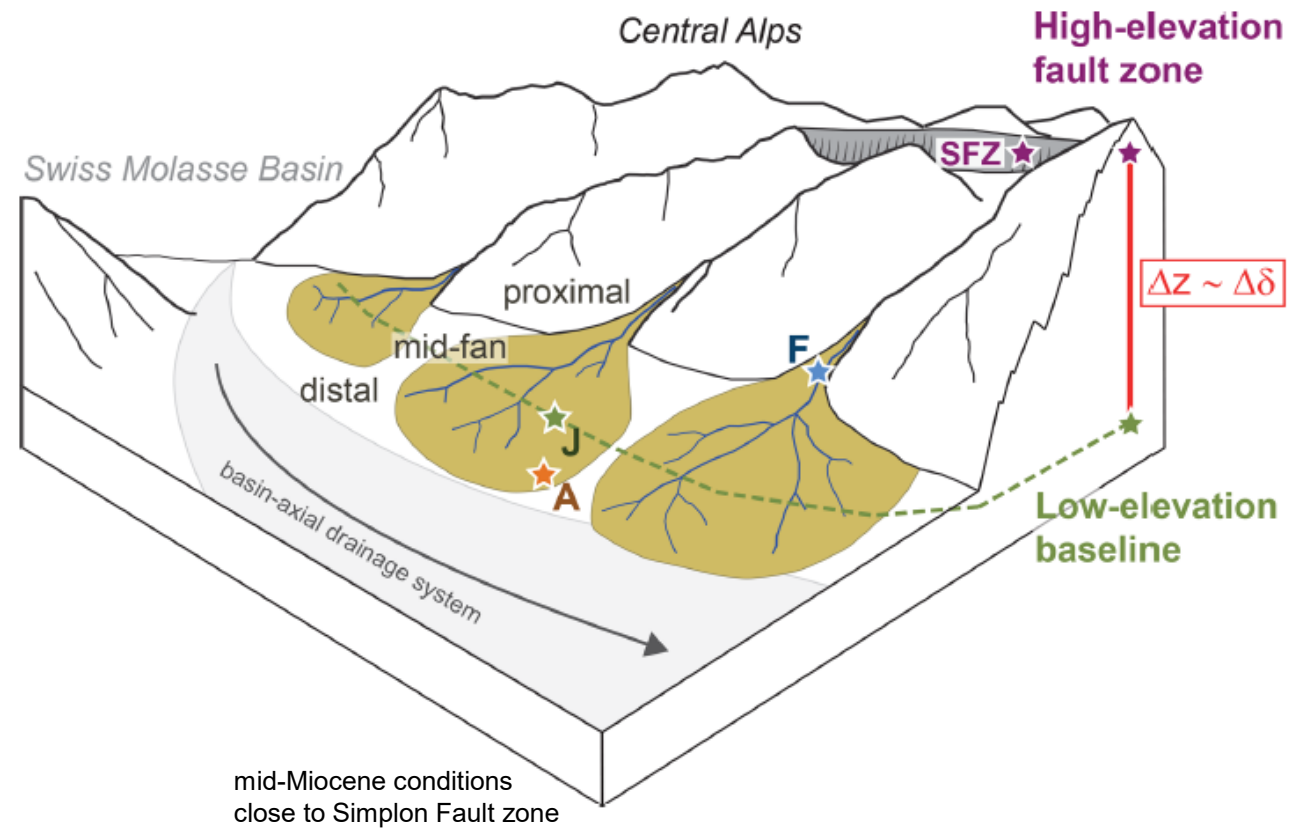
23 Apr 2026  
**Enhancing 2D deep seismic reflection imaging using shot domain regularization: a case study from the Jiangnan Orogenic Belt, South China**  
 Hui Zhang, Jiayong Yan, Zhendong Liu, Jianguang Han, Hao Wang, and Jiahao Liu  
 Solid Earth, 17, 689–709, <https://doi.org/10.5194/se-17-689-2026>, 2026  
 ▶ [Short summary](#)

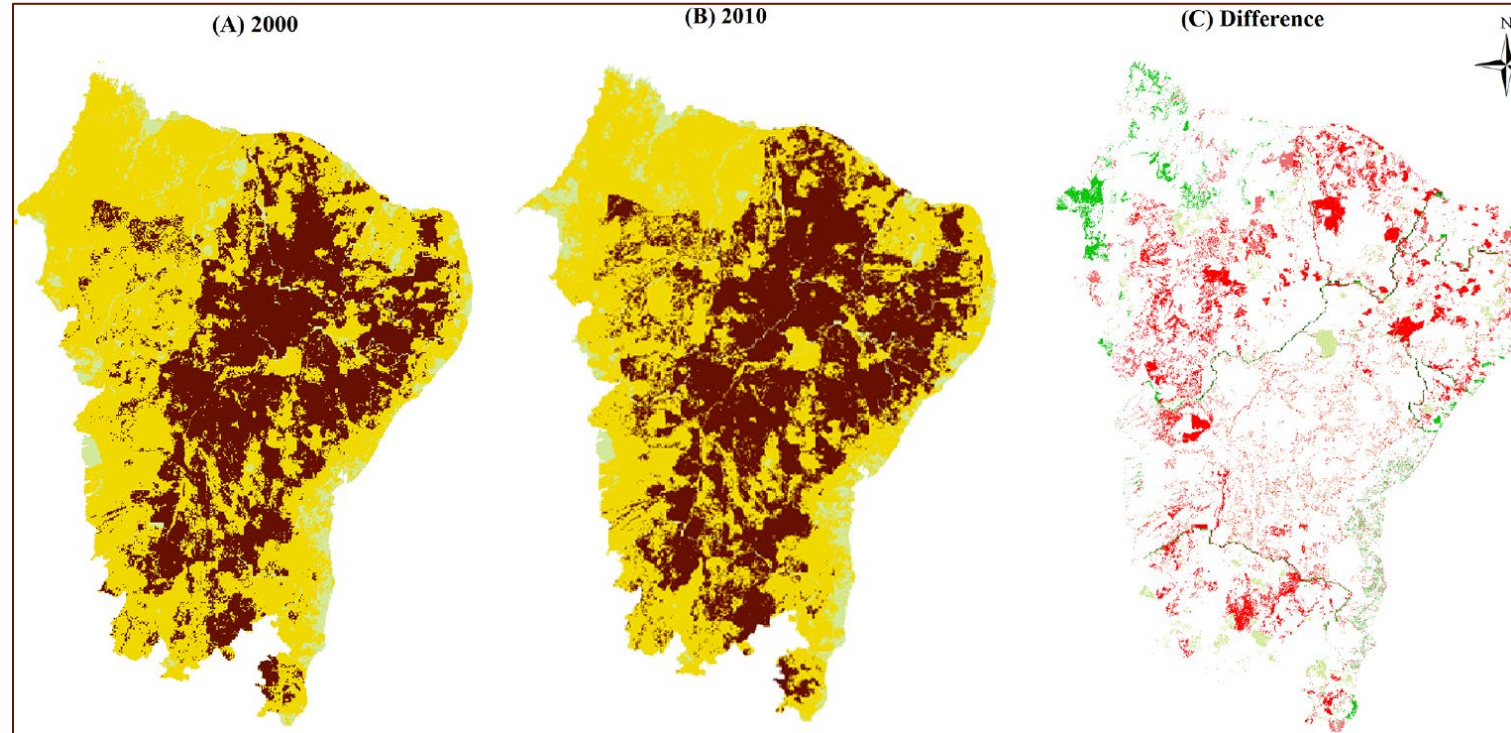
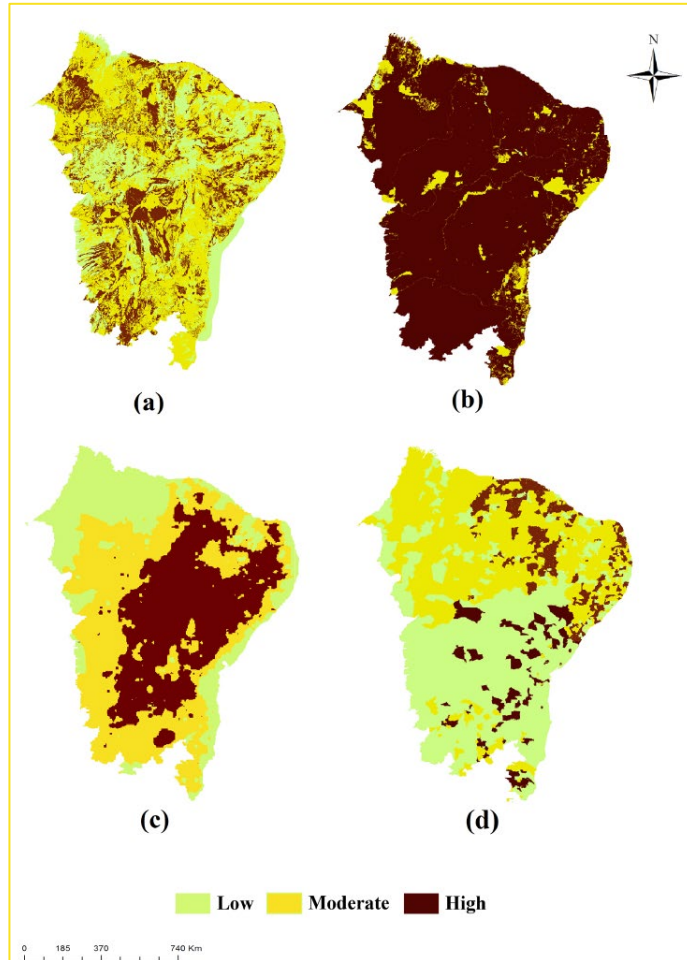
22 Apr 2026  
**Constraints on the Lithospheric Structure and Rheology of Northern Chile from 8-year Post-Seismic Deformation following the  $M_w$ 8.1 Iquique Earthquake**  
 Juliette Cresseaux, Mathilde Radiguet, Marie Pierre Doin, Marcos Moreno, Flora Huiban, Mathilde Marchandon, Juan Carlos Baez, Aubin Tsapong Tsague, Gaël Janex, Andres Tassara, and Anne Socquet  
 EGUsphere, <https://doi.org/10.5194/egusphere-2026-2003>, 2026





outcrop conditions





environmental susceptibility

Susceptibility  
 Low  
 Moderate  
 High

Change Susceptibility  
 S\_high - S\_low  
 S\_high - S\_moderate  
 S\_low - S\_high  
 S\_moderate - S\_low  
 S\_low - S\_moderate  
 S\_moderate - S\_high  
 S = Susceptibility

physical land/management/climate/social  
 quality indices in Brazil



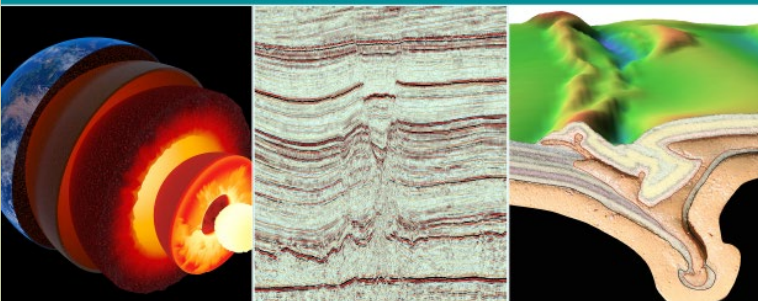
Vieira et al., 2015  
 Identifying areas susceptible to desertification  
<https://doi.org/10.5194/se-6-347-2015>

100% open access and publicly peer reviewed since 2010!



**Solid Earth**  
www.solid-earth.net

EGU European Geosciences Union  
Copernicus Publications The Innovative Open Access Publisher



A community-driven journal that in 2025\* published extensive, exciting new research on:



"I chose to publish with Solid Earth due to its transparent peer-review process and the dedication of its editors to ensure a swift review process, coupled with its reputation for promoting groundbreaking research in geosciences."

Zahra Zali, author 2023  
doi.org/10.5194/se-14-181-2023



Key Journal Metrics:

- Papers published in 2025: 71
- Number of countries where authors were based in 2025: 35
- Number of countries where editors were based in 2025: 17



\*The word cloud displayed was generated using all the titles of articles published by the journal in 2025.