



POLLEN
DIARY

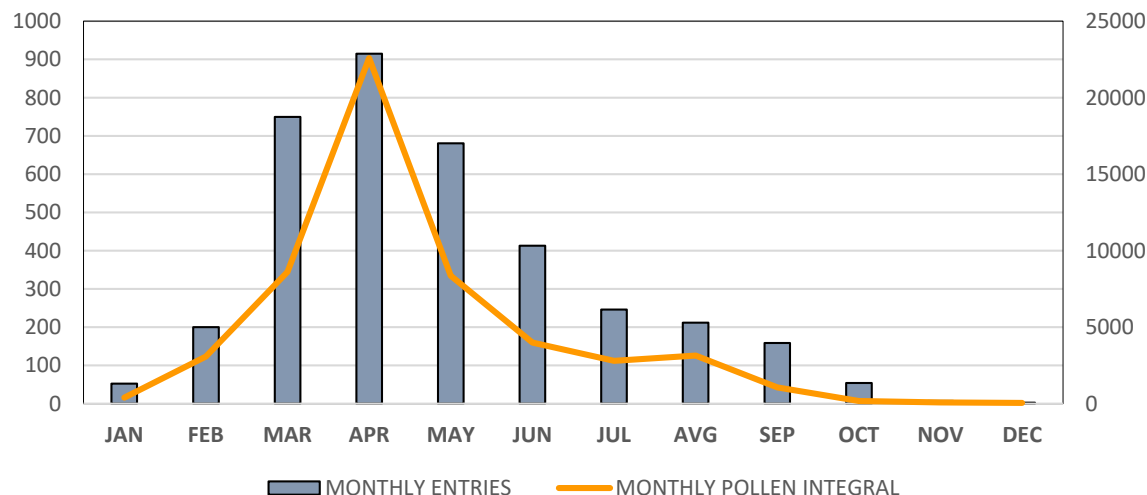
The Patient's Hay-fever diary: users feedback can improve pollen information

Anja Simčič¹, Andreja Kofol Seliger¹, Tom Koritnik¹, Tanja Cegnar²

1- National Laboratory of Health, Environment and Food, Slovenia

2- Slovenian Environment Agency

AVERAGE MONTHLY ENTRIES vs AVERAGE MONTHLY
POLLEN INTEGRAL (2014-2018)



The PDH (www.pollendiary.com) is a web-based tool developed in cooperation with Austrian pollen Information Service, the Stiftung Deutscher Polleninformationsdienst, Réseau National de Surveillance Aérobiologique France, the ORL Department at Vienna Medical University and the Allergy-Centre-Charité Berlin (Berger et al. 2011)



SLI – SYMPTOM LOAD INDEX; APL – ANNUAL POLLEN LOAD (Bastl et al. 2014)

