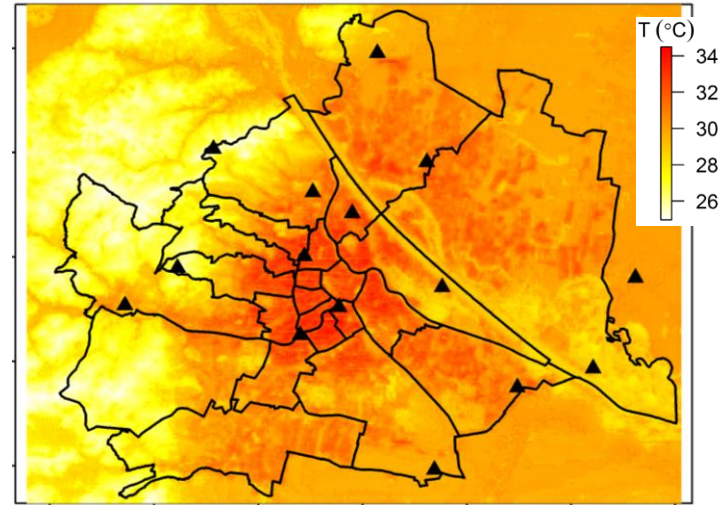
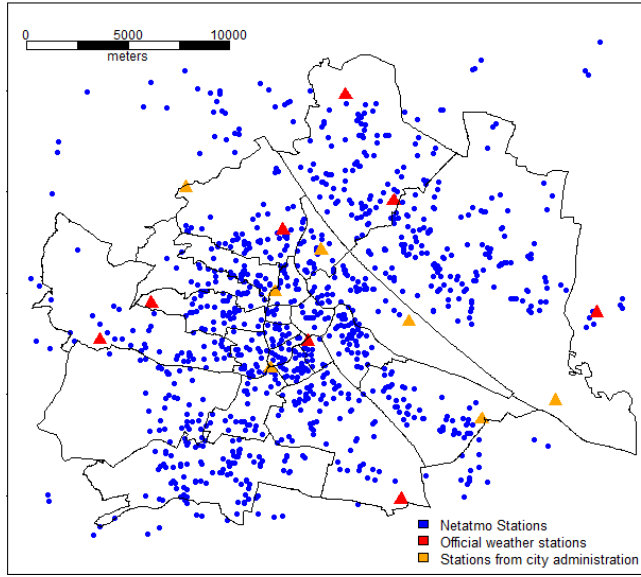
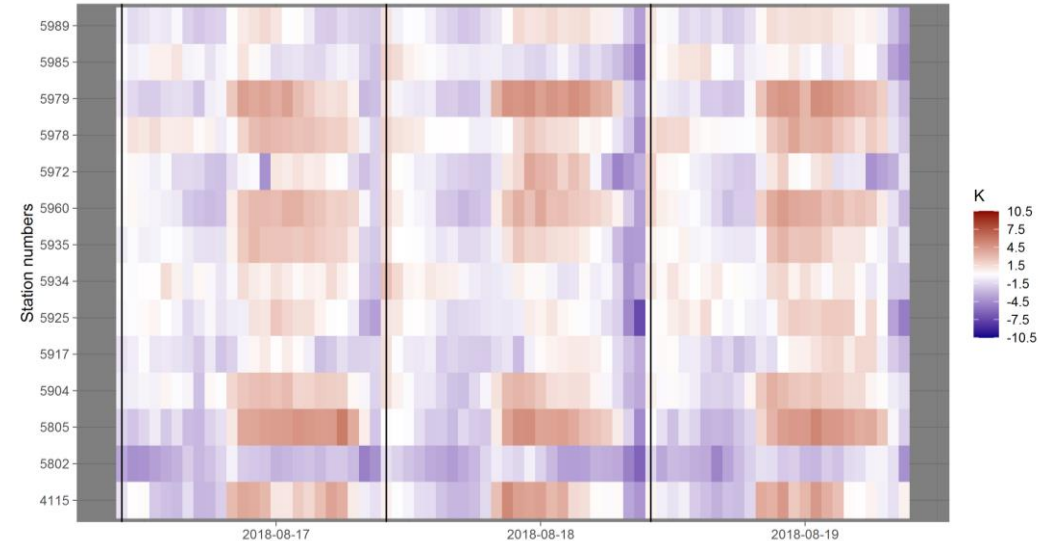


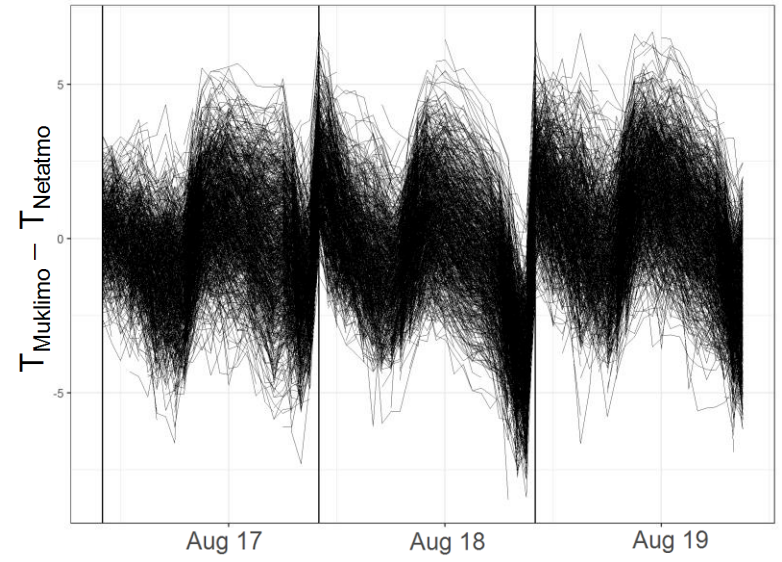
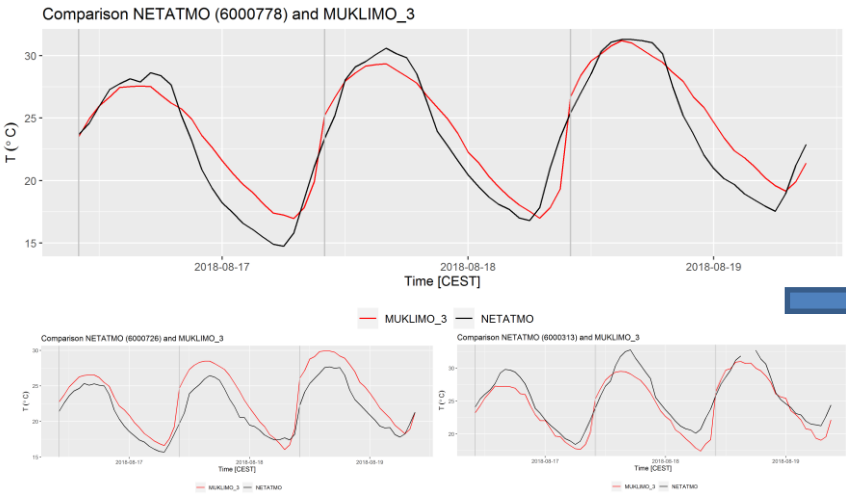
Assessing urban climate model results with crowd-sourced data



Muklimo_3 simulation, 18.08.2018, 3 pm, 100 m spatial resolution



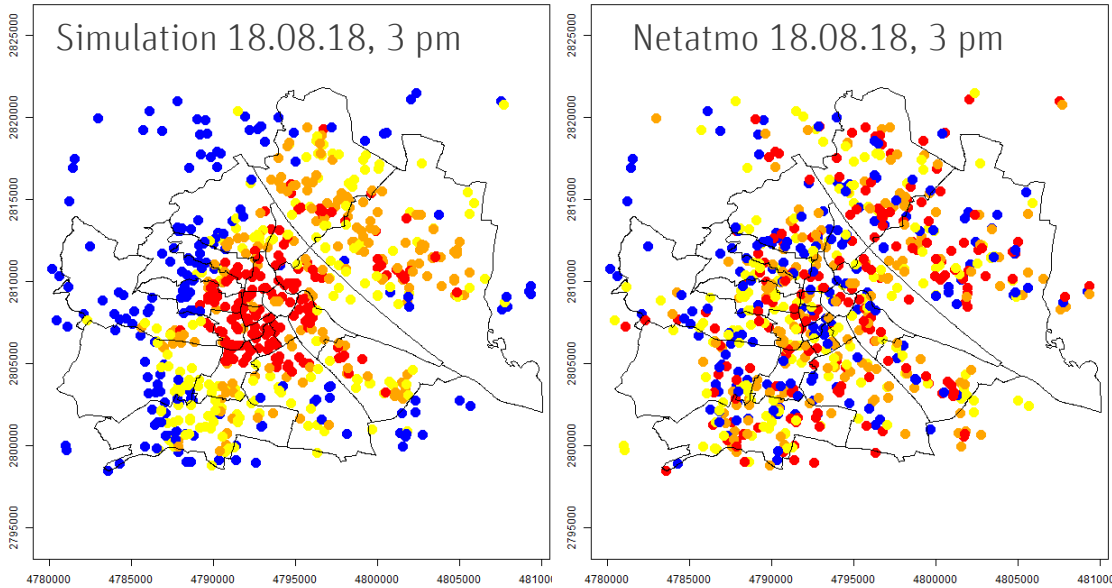
Difference: $T_{\text{Muklimo}} - T_{\text{conventional station}}$



Comparison Muklimo 3 - Netatmo

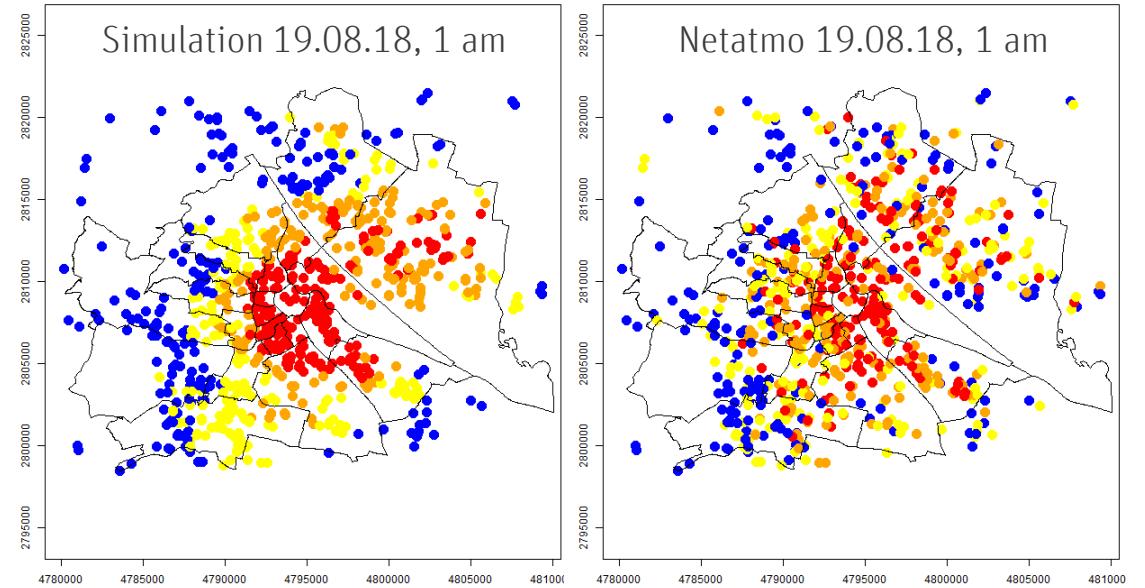
- Often similar pattern as for conventional stations:
- Slight underestimation of temperature in the afternoon + overestimation at night, large spread

Assessing urban climate model results with crowd-sourced data – spatial patterns



Day: Spatial pattern not similar

- Strong variation at small-scale (sun / shade)
- Better to compare with higher resolution model?!



Night: Spatial pattern similar

- No effect of direct sunlight and shade
- UHI visible

