

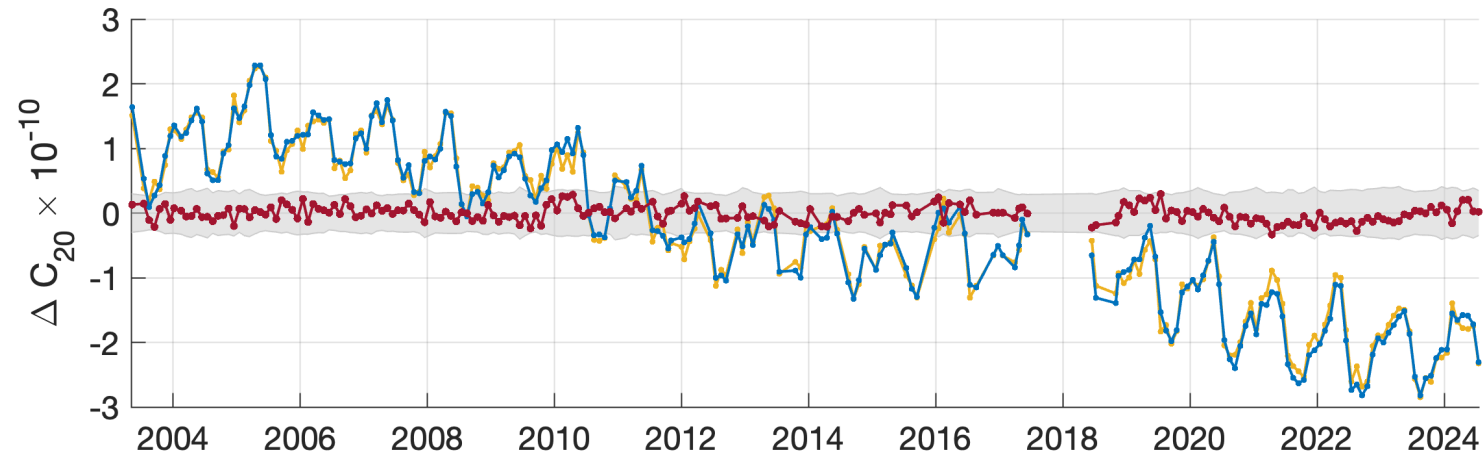


Updates on TN-14 and SLR validation efforts

Bryant D. Loomis¹, Kenny Rachlin¹, Ben Griffin¹

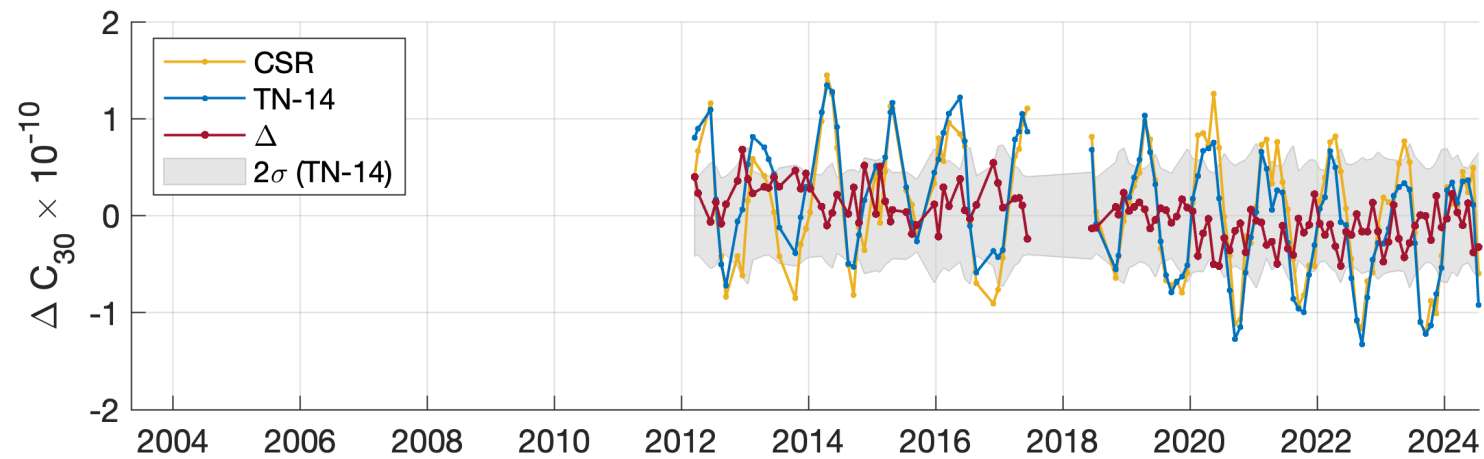
¹Geodesy and Geophysics Laboratory, NASA Goddard Space Flight Center

TN-14 vs. CSR SLR (Ries' MEaSURES product)

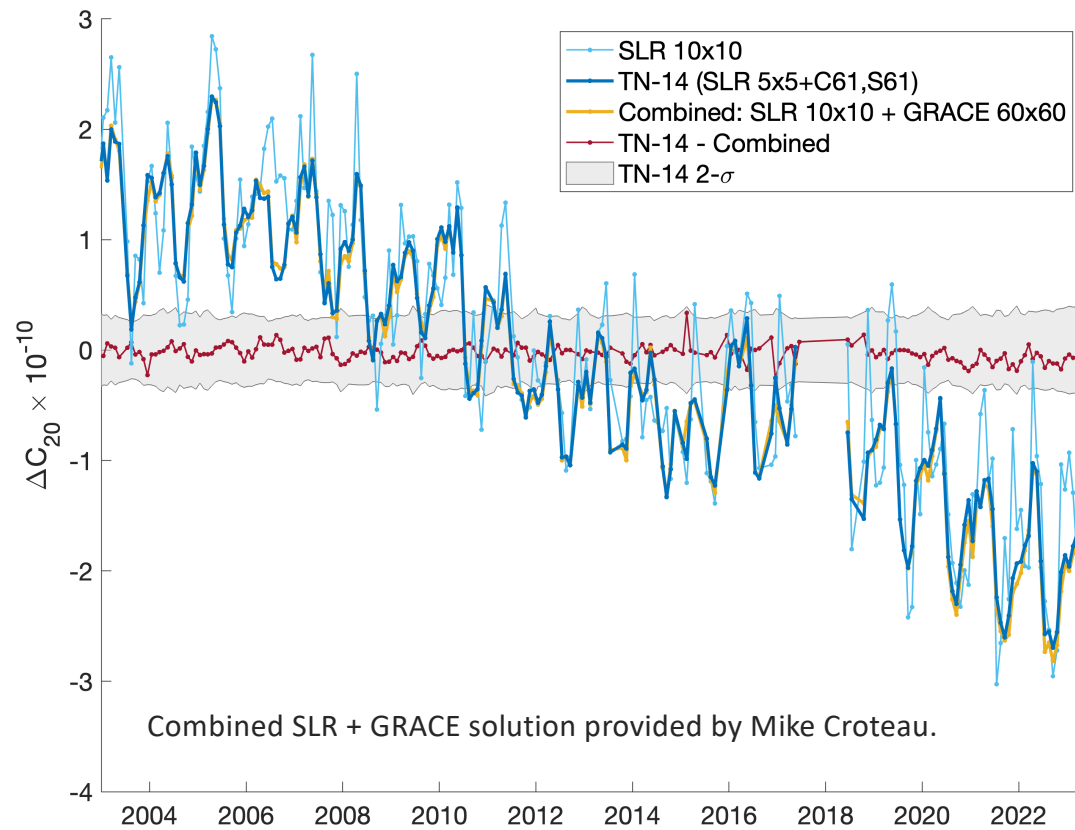


GSFC TN-14 & CSR Ries:

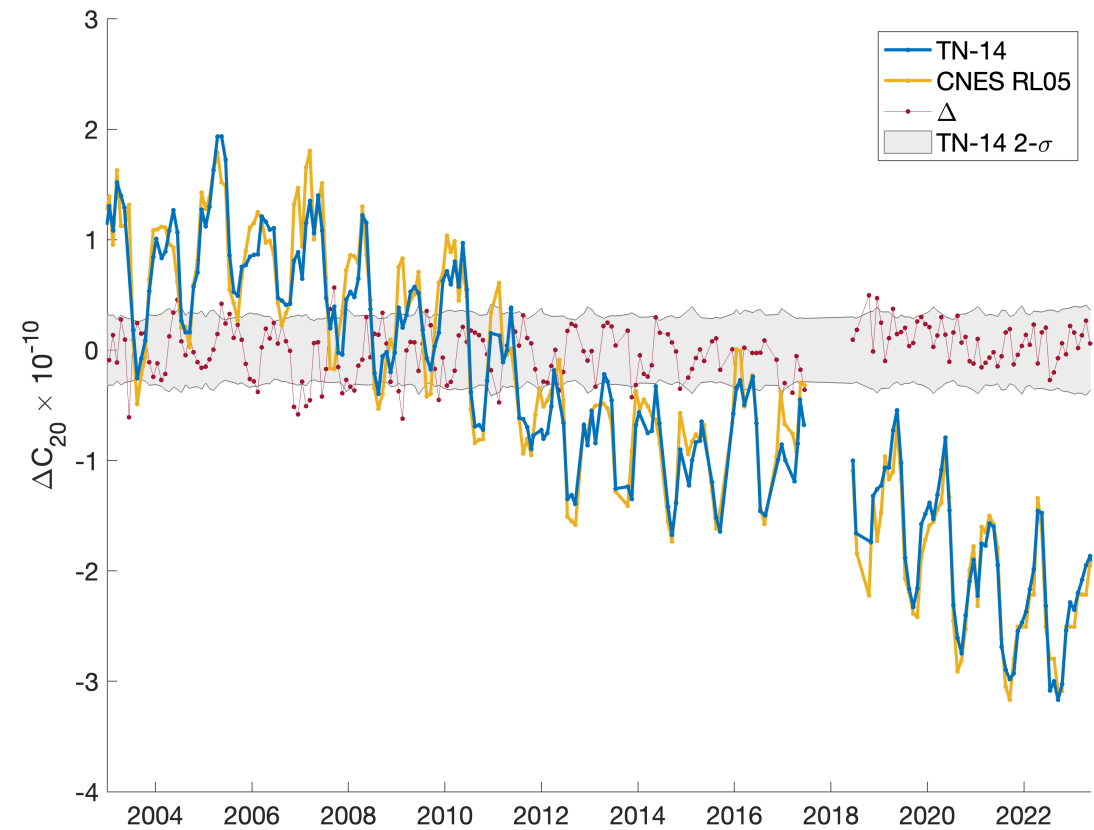
- Estimate $5 \times 5 + C_{61}, S_{61}$
- Apply time variable gravity modeling when processing SLR tracking data (different modeling strategies)

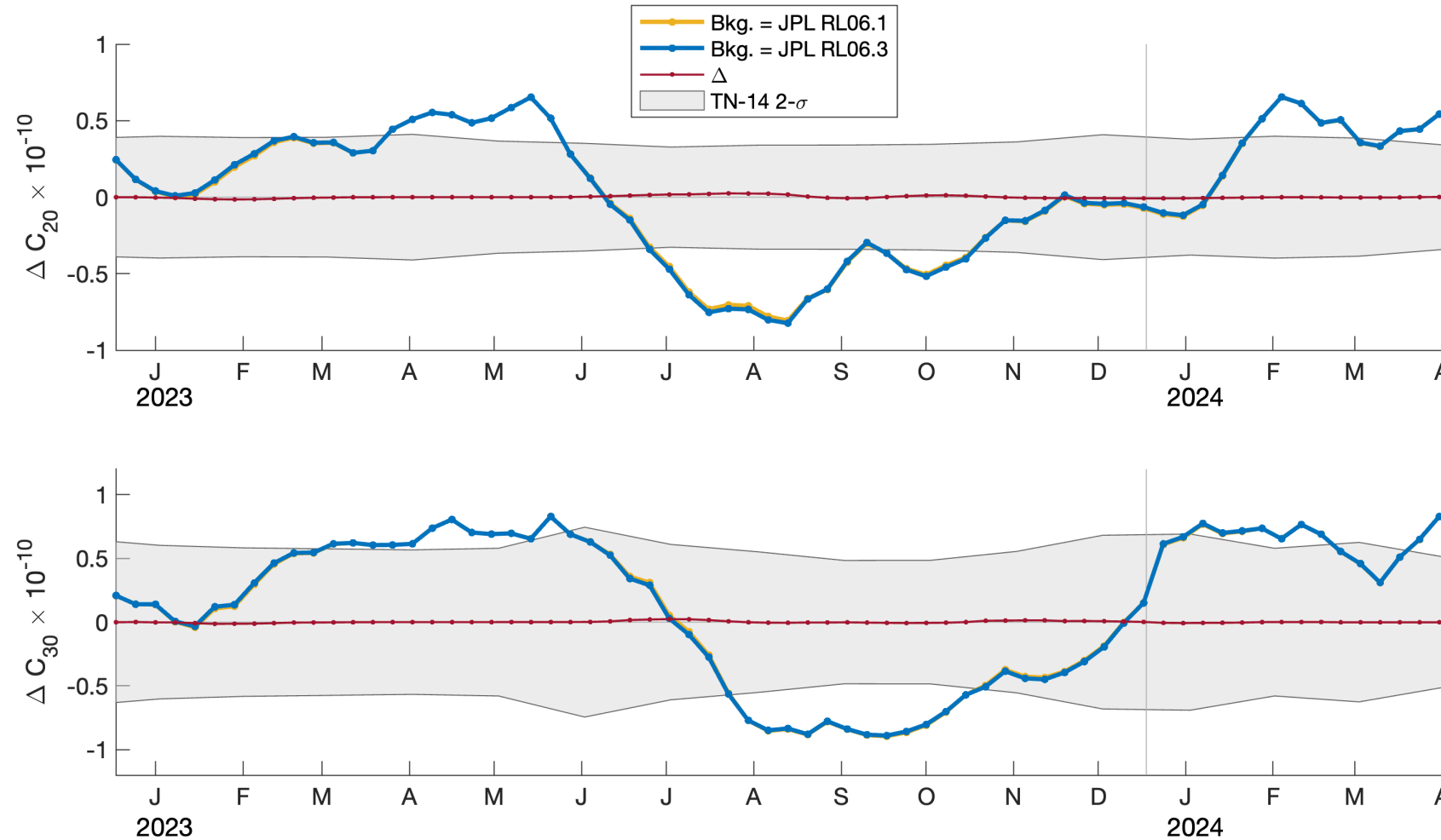


TN-14 C_{20} vs. GSFC GRACE + SLR

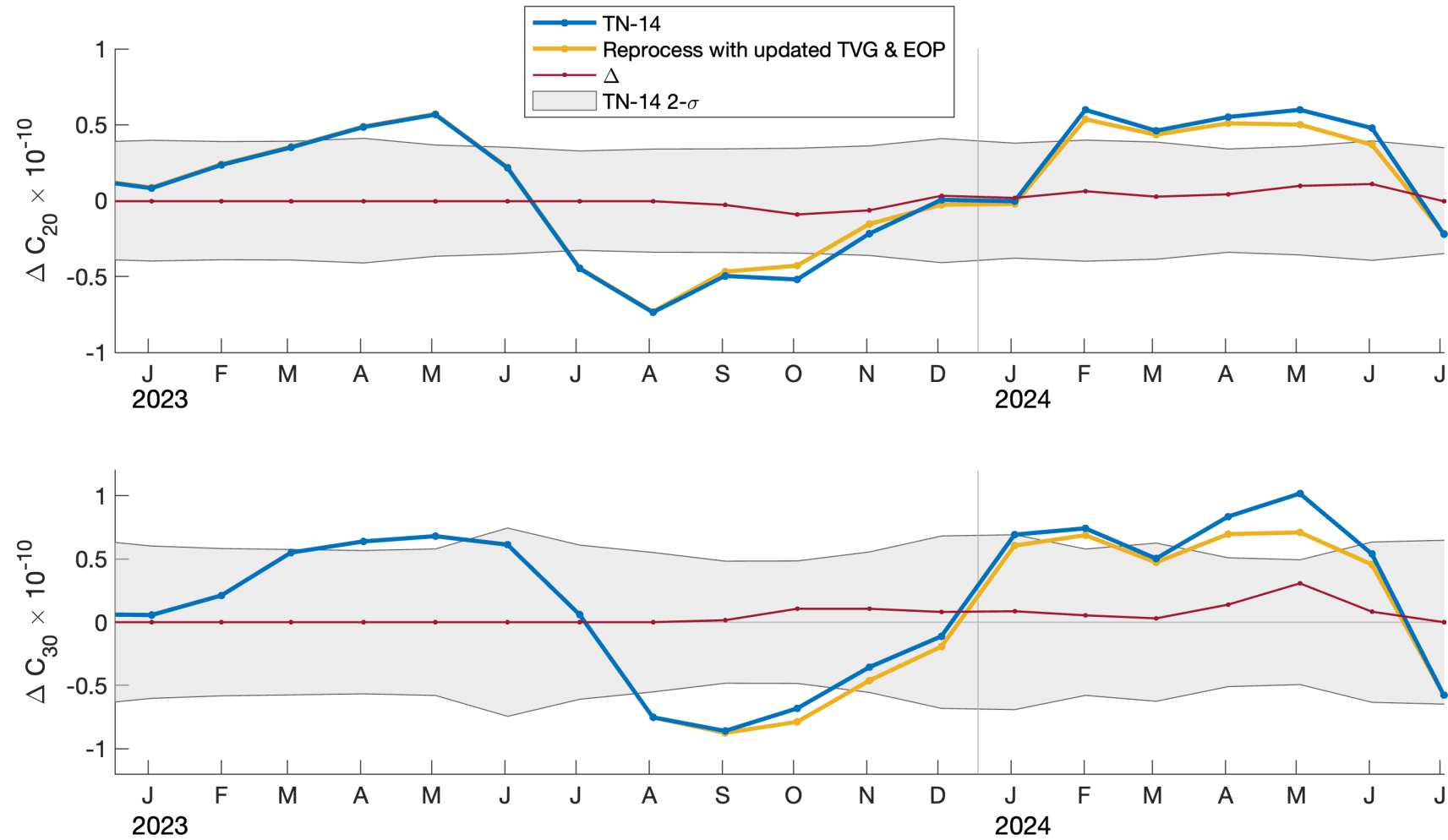


TN-14 C_{20} vs. CNES GRACE + SLR





Weekly 28-day sliding window 5x5 solutions



Weekly 28-day sliding window 5x5 solutions with latest TVG model & EOP:

<https://earth.gsfc.nasa.gov/geo/data/slr>

Global TWS: SLR mascons vs. JPL RL06.3



Global TWS: SLR mascons vs. CSR RL06.3

